

# FUNCTION EXTENSIONS VACUU-SELECT

*User Management*  
*SYNCHRO*



## Instructions for use



## **Original instructions Keep for further use!**

*This manual is only to be used and distributed in its complete and original form. It is strictly the user's responsibility to carefully check the validity of this manual with respect to the product.*

### Manufacturer:

**VACUUBRAND GMBH + CO KG**  
**Alfred-Zippe-Str. 4**  
**97877 Wertheim**  
**GERMANY**

### Phone:

Head office +49 9342 808-0  
Sales +49 9342 808-5550  
Service +49 9342 808-5660

Fax: +49 9342 808-5555

Email: [info@vacuubrand.com](mailto:info@vacuubrand.com)

Web: [www.vacuubrand.com](http://www.vacuubrand.com)

*Thank you for purchasing this product from **VACUUBRAND GMBH + CO KG**. You have chosen a modern and technically high quality product.*

## TABLE OF CONTENTS

<b>1</b>	<b>Introduction</b>	<b>5</b>
1.1	User information . . . . .	5
1.2	Display conventions . . . . .	6
1.2.1	Notes . . . . .	6
1.2.2	Operation gestures . . . . .	6
1.2.3	Action instructions (operating steps) . . . . .	7
1.2.4	Supplementary controls and symbols . . . . .	7
1.3	Target group description . . . . .	9
1.3.1	Personnel qualification . . . . .	9
1.3.2	Responsibility matrix . . . . .	9
<b>2</b>	<b>Product description</b>	<b>10</b>
2.1	Function extensions . . . . .	10
2.1.1	Requirements . . . . .	10
2.1.2	License file for unlocking function extensions . . . . .	10
2.2	User Management . . . . .	10
2.3	SYNCHRO . . . . .	11
<b>3</b>	<b>Function Extensions</b>	<b>12</b>
3.1	Opening the Function Extensions menu . . . . .	12
3.2	Requesting a license file . . . . .	13
3.3	Unlocking function extensions . . . . .	14
3.3.1	Via license code . . . . .	14
3.3.2	Via USB flash drive . . . . .	15
3.4	Deactivating function extensions . . . . .	16
<b>4</b>	<b>User Management</b>	<b>18</b>
4.1	Creating an administrator password . . . . .	18
4.2	User Accounts . . . . .	19
4.2.1	Setting up and editing . . . . .	19
4.2.2	Removing users . . . . .	23
4.3	User groups . . . . .	24
4.3.1	Setting up and editing . . . . .	24
4.3.2	Editing a user group + context menu . . . . .	27
4.3.3	Advanced Settings . . . . .	29
4.4	User information . . . . .	30
4.4.1	Switching users . . . . .	30
4.4.2	Locking and unlocking (display) . . . . .	32
4.4.3	Other context menus explained . . . . .	33
4.5	Import/Export User Management . . . . .	35
4.5.1	Export User Management + Applications . . . . .	35
4.5.2	Import User Management + Applications . . . . .	36
4.6	Login/logout . . . . .	38
4.6.1	Login at start up . . . . .	38
4.6.2	Auto start function . . . . .	38
4.7	Password reset . . . . .	39
4.7.1	User password . . . . .	39
4.7.2	Administrator password . . . . .	40

<b>5</b>	<b>SYNCHRO</b>	<b>41</b>
5.1	User interface .....	41
5.2	Error indication .....	44
<b>6</b>	<b>Troubleshooting</b>	<b>45</b>
6.1	Function Extensions .....	45
6.2	User Management .....	45
6.3	SYNCHRO .....	46
<b>7</b>	<b>Appendix</b>	<b>47</b>
<b>8</b>	<b>Index</b>	<b>48</b>



## 1 Introduction

This document describes the general aspects of the function extensions that you have purchased. For additional descriptions about operation, please read the user manual of your controller.

### 1.1 User information

#### Safety

---

- Read the user manual before using the product.
- Store the user manual where it is accessible and within reach at all times.
- Correct use of the product is essential for safe operation. Observe all safety information!
- In addition to the information in this manual, please observe the applicable national regulations on accident prevention and work safety.

#### General

---

- To improve readability, the general term **controller** is used in place of the product names **VACUU-SELECT** and **VACUU-SELECT complete**.
- The figures and drawings are examples and are only intended to assist in comprehension.
- Products are subject to technical and design changes without notice in the context of continuous product improvement.

#### Copyright

---

The content of this user manual is protected by copyright. Making copies for internal purposes is permitted; e.g. for training courses.

© VACUUBRAND GMBH + CO KG

## 1.2 Display conventions

### 1.2.1 Notes

#### NOTE

**Reference to a potentially harmful situation.**

Non-observance may result in material damage.

#### Supplementary notes

#### IMPORTANT!

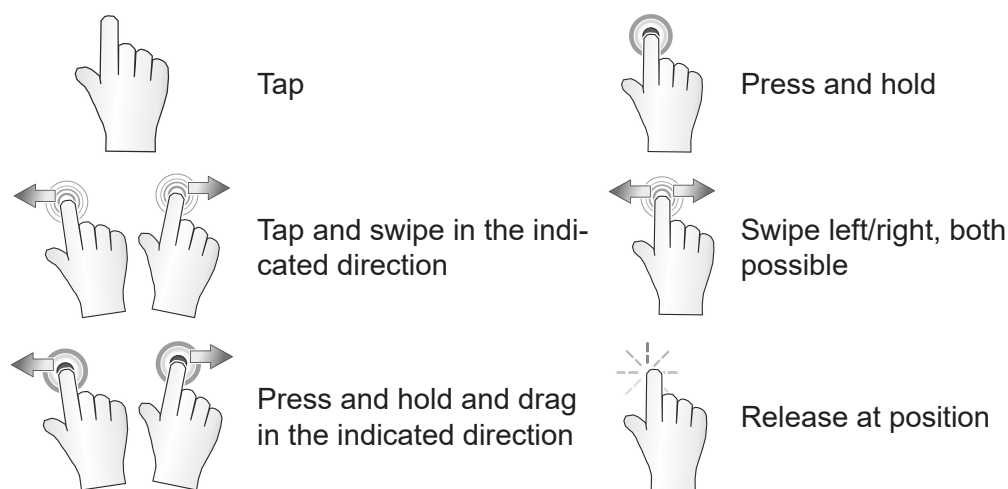
- ⇒ Description that you must adhere to when performing actions.
- ⇒ Important information for the proper operation of your product.



- ⇒ Tips + tricks
- ⇒ Helpful information

### 1.2.2 Operation gestures

Gesture symbols



### 1.2.3 Action instructions (operating steps)

Operating steps  
displayed as text

#### Action instructions (easy)

⇒ You are prompted to perform an action.

- ☒ Result of the action

#### Action instructions (multiple steps)

1. First action step

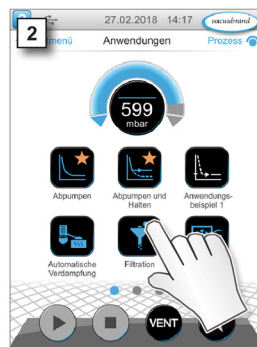
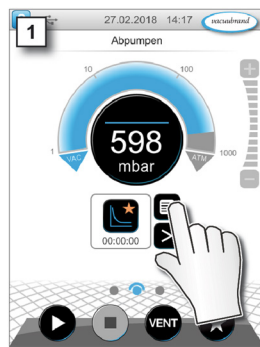
2. Next action step

- ☒ Result of the action

Action instructions that require several steps must be followed in the order described.

#### Action instructions (presented graphically)

Principle display  
graphical operating steps



1. First action step




2. Next action step

- ☒ Result of the action

### 1.2.4 Supplementary controls and symbols




#### Status bar

Meaning of new symbols  
in the status bar

Symbol (icon)	Meaning
	<b>Help</b> <ul style="list-style-type: none"> <li>▶ Supplementary description of Function Extensions.</li> <li>▶ Supplementary description of User Management.</li> </ul>
	<b>User Options</b> <ul style="list-style-type: none"> <li>▶ Display user information for logged-in users.</li> <li>▶ Log out user.</li> <li>▶ Change password.</li> <li>▶ Lock device.</li> <li>▶ User Options are only shown if User Management has been unlocked and activated.</li> </ul>
	<b>USB connected</b> <ul style="list-style-type: none"> <li>▶ Indicates that a USB storage device is connected.</li> </ul>


### Buttons – function extensions menu

Meaning of buttons in  
Function Extensions  
menu

Symbol (icon)	Meaning
	<b>Unlock Information</b> <ul style="list-style-type: none"> <li>▶ Procedure for acquiring a license for your controller.</li> <li>▶ Serial number and manufacturing date of the controller.</li> </ul>
	<b>Function Unlocking</b> <ul style="list-style-type: none"> <li>▶ Function button for assisted unlocking.</li> <li>▶ License code entry or unlocking via USB flash drive.</li> </ul>
	<b>Function Activation</b> <ul style="list-style-type: none"> <li>▶ Activate unlocked function extensions (for some function extensions, a password may be required after restart).</li> <li>▶ Deactivate unlocked function extensions.</li> </ul>




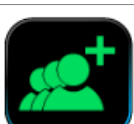

### Buttons – administration menu

Meaning of button in  
Administration menu

Symbol (icon)	Meaning
	<b>User Management menu</b> <ul style="list-style-type: none"> <li>▶ Create and manage users and user groups.</li> <li>▶ Define login options.</li> </ul>

### Buttons – User Management menu

Meaning of buttons in  
User Management

Symbol (icon)	Meaning
	<b>User Accounts overview</b> <ul style="list-style-type: none"> <li>▶ Predefined users: administrator, default user. Predefined users cannot be deleted.</li> <li>▶ User accounts created.</li> </ul>
	<b>User Groups overview</b> <ul style="list-style-type: none"> <li>▶ Predefined user groups: administrators, default group. Predefined user groups cannot be deleted.</li> <li>▶ User groups created.</li> </ul>
	<b>Create User Account</b> <ul style="list-style-type: none"> <li>▶ Set a user name and password.</li> <li>▶ Assignment to a user group.</li> </ul>
	<b>Create User Group</b> <ul style="list-style-type: none"> <li>▶ Set a group name.</li> <li>▶ Assign shared applications and authorization settings.</li> </ul>
	<b>Advanced Settings</b> <ul style="list-style-type: none"> <li>▶ Setting options: Set default user off/on, auto login off/on and password complexity.</li> </ul>

## 1.3 Target group description

### IMPORTANT!

Users of the competence areas listed in the *Responsibility matrix* must have the appropriate qualifications for the listed activity.

### 1.3.1 Personnel qualification

<b>Administrator</b>	User with extended authorizations.
<b>Default user</b>	User with assigned authorizations.

### 1.3.2 Responsibility matrix

Responsibility matrix and  
competency areas

Activity	Administrator	Default user
Unlock function extensions	<b>x</b>	
Create users/user groups	<b>x</b>	
User management + export/import applications	<b>x</b>	<b>(x)</b>
Assign access rights	<b>x</b>	
Create passwords	<b>x</b>	
Reset passwords	<b>x</b>	
Unlocked operation		<b>x</b>

## 2 Product description

### 2.1 Function extensions

Product description of  
function extensions in  
the controller

From software version V1.06 / V1.00, the VACUU SELECT vacuum controller offers the option of unlocking additional function extensions; e.g., User Management.

Controllers with earlier software versions can be equipped for unlocking function extensions by performing a [software update](#).

A device-dependent license is required to unlock a specific function extension. The license contains an individual license file as well as a license code for the desired function extension and is created on the basis of the serial number and the manufacturing date of the controller.

The function extension can be unlocked using the provided license file on a USB flash drive or by entering the license code via the on-screen keyboard.

Unlocked function extensions can be deactivated again at any time in the **Function Extensions** menu.

#### 2.1.1 Requirements

Supported software  
version

Software from version V1.06 / V1.00 onwards is required to use function extensions.

⇒ If necessary, perform a [software update](#) of the vacuum controller.

Acquiring a license

License to unlock function extensions.

⇒ For further information on function extensions, please contact the Sales team at **VACUUBRAND**<sup>1</sup>.

#### 2.1.2 License file for unlocking function extensions

Unlocking with license  
code

If you have a valid license, please follow the set-up assistant that appears after you insert the USB flash drive containing the license file. Alternatively, you can enter the license code using the on-screen keyboard.

→ See also Chapter: **3.3 Unlocking function extensions**

## 2.2 User Management

User Management  
function extension

VACUU·SELECT User Management is a function extension of the VACUU·SELECT interactive vacuum controller. User authorizations can be flexibly customised to meet the requirements of the respective customer.

When creating user groups, different users can be configured with different authorizations.

Advantages of User Management: efficient multiple use, ensures consistent process parameters and minimizes operating errors.

<sup>1</sup> [Contact](#) – material number: **Ordering information on page 47**

## 2.3 SYNCHRO

The SYNCHRO function is a functional extension for the interactive vacuum controller VACUU·SELECT.

With the SYNCHRO function, it is possible to control two processes in parallel with one single vacuum controller VACUU·SELECT.

The processes can run independently of each other and at the same time. This requires two sensors and two valves.

Thus, for example, two rotary evaporators can be handled with one VACUU·SELECT. Another option is to operate two tapping points in one fume cupboard. These can be tapping points for rough vacuum and fine vacuum.

### 3 Function Extensions

The Function Extensions sub menu enables you to unlock additional functions and activate/deactivate functions that are already unlocked.

To unlock function extensions you need a USB flash drive with a valid license file or a license code that can be entered via the on-screen keyboard.

#### 3.1 Opening the Function Extensions menu

##### Opening the Function Extensions sub menu

→ Example  
Process display



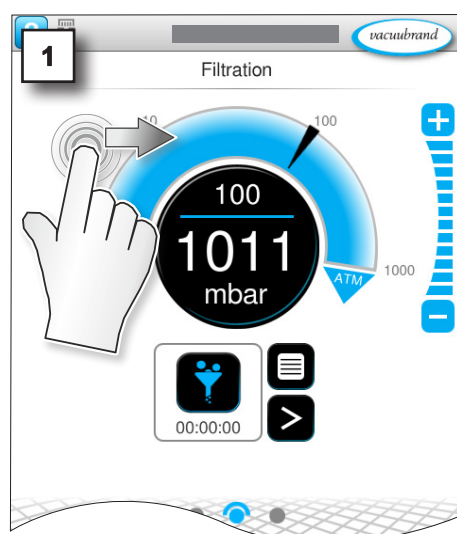
Tap



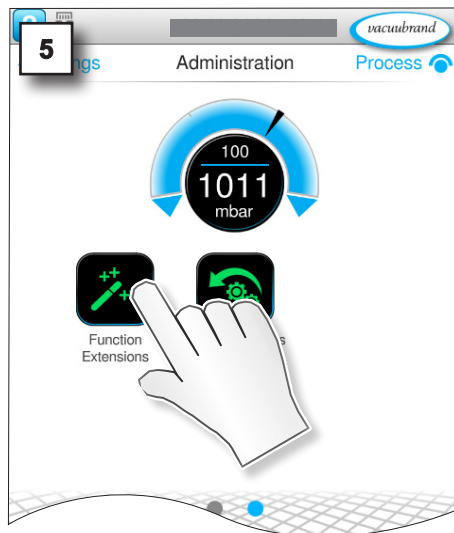
Press and  
hold and drag



Press and  
hold and drag





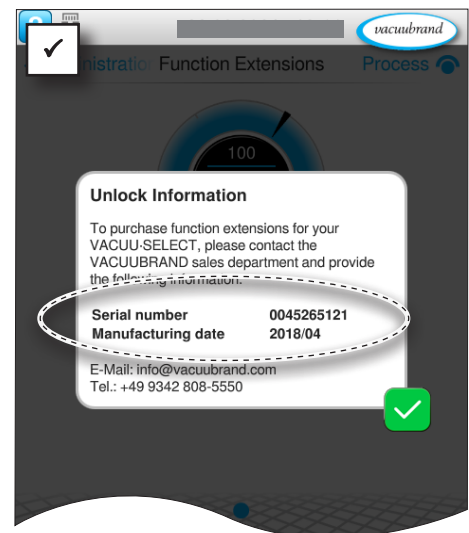
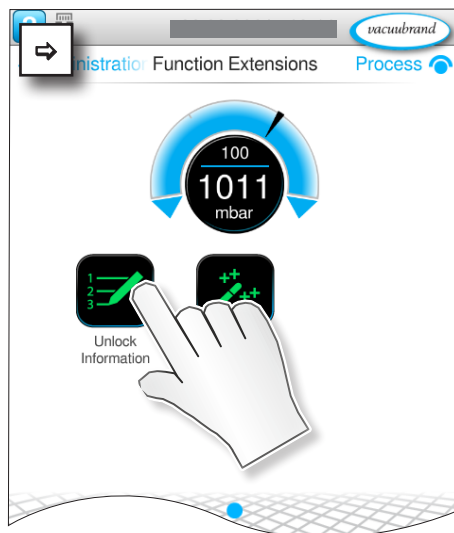


### 3.2 Requesting a license file

→ Example  
Main Menu \ Settings \  
Administration \ Function  
Extensions



Tap



1. Make a note of the serial number and manufacturing date .

2. Provide this information when ordering the license .

☒ You will receive the license code and a license file via e-mail .

#### IMPORTANT!

The license is linked to the controller by matching serial number and manufacturing date. The license can only be used on one controller.

- ⇒ Please proceed as described above if you would like to unlock function extensions for multiple controllers.
- ⇒ Provide the controller serial number and manufacturing date for each license.

### 3.3 Unlocking function extensions

#### 3.3.1 Via license code

##### Entering a license code

→ Example  
Main Menu \ Settings \  
Administration \ Function  
Extensions



Tap

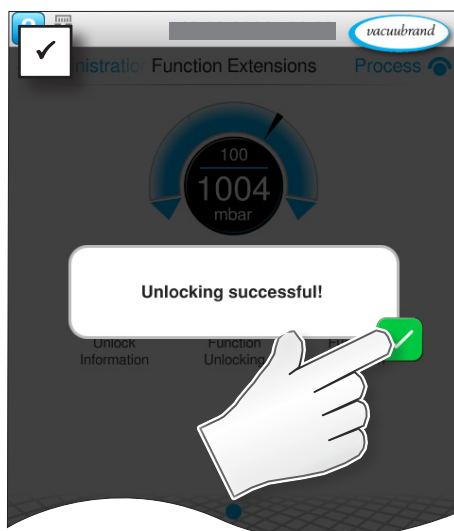
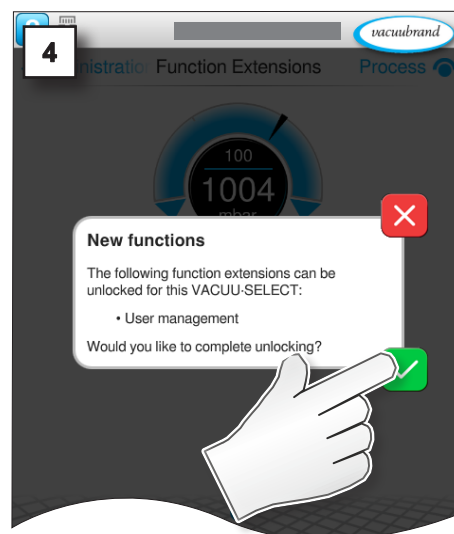
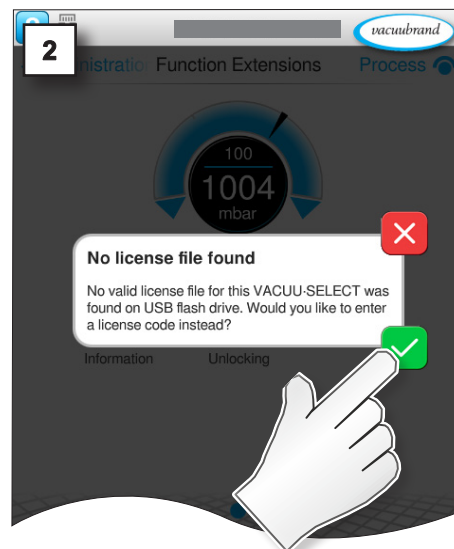
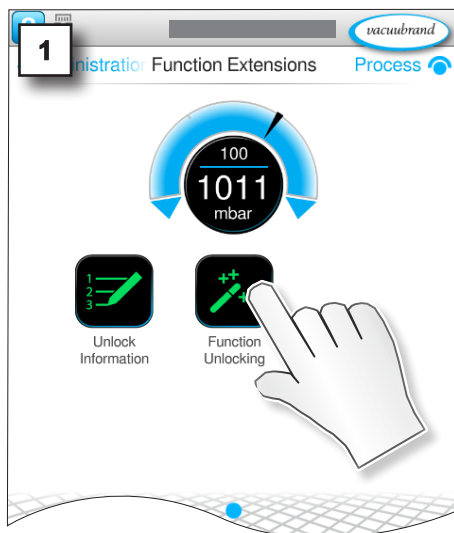


Cancel



Confirm

→ Example  
Entering a license code  
and confirming



### 3.3.2 Via USB flash drive



If you would like to add a function extension for several controllers at the same time, then you can save all the license files that you obtain from us on a USB flash drive. Go to each controller with this USB flash drive and perform function unlocking for each one. By way of the stored serial number, the controller automatically detects the matching license for unlocking the function extensions.

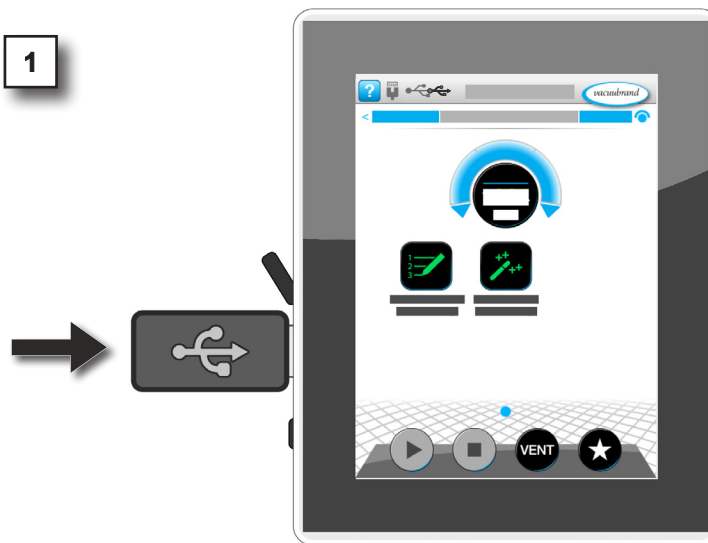
#### Transferring the file via USB flash drive

→ Example  
Main Menu \ Settings \  
Administration \ Function  
Extensions



Tap

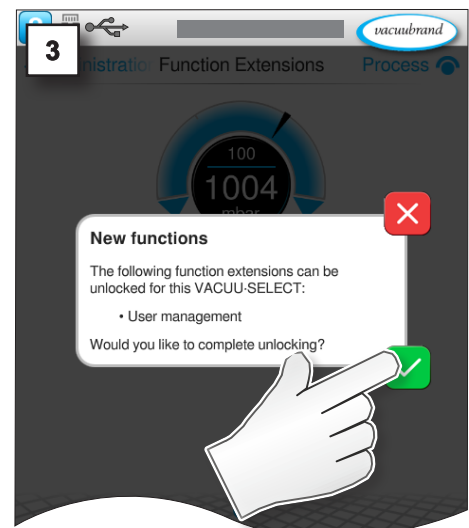
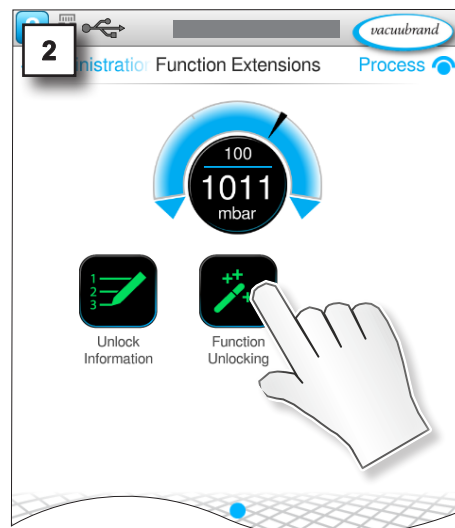
1

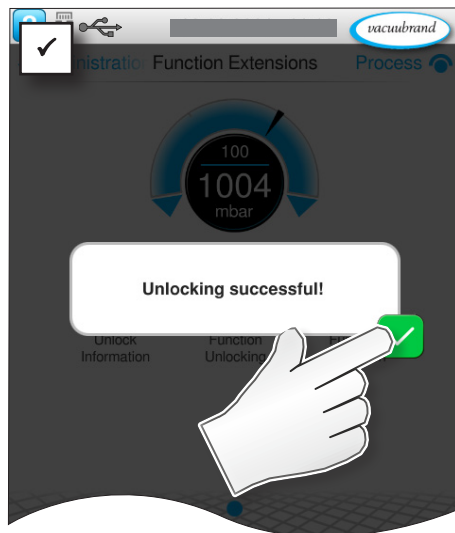


Cancel



Confirm





## 3.4 Deactivating function extensions

### Example User Management – switching off function activation

→ Example  
Main Menu \ Settings \  
Administration \ Function  
Extensions



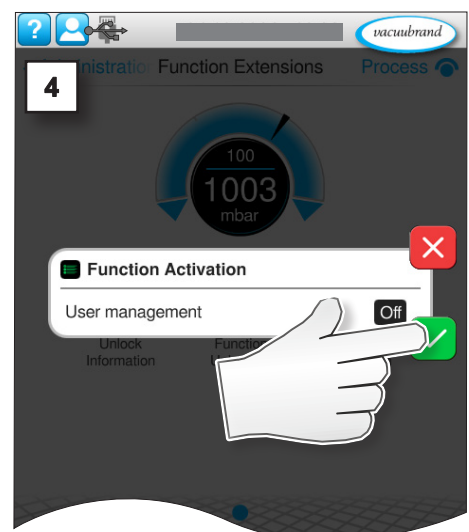
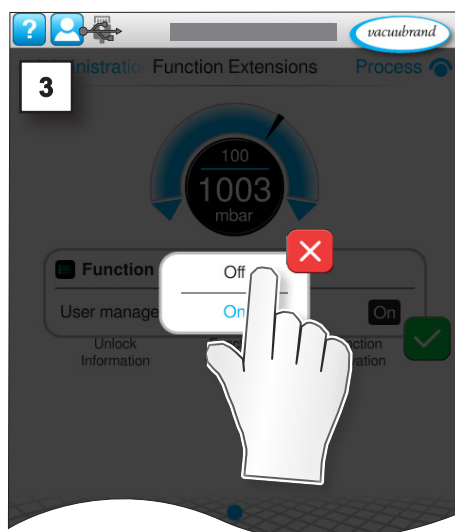
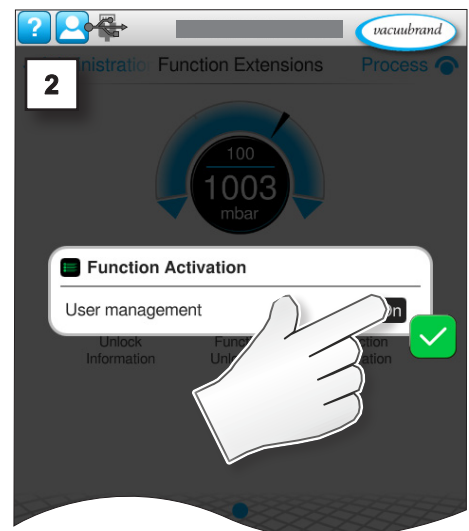
Tap



Cancel



Confirm



**NOTE**

**Users and user groups are permanently deleted after confirming the message.**

⇒ Export important user-specific settings before switching off the function extension → see Chapter: **4.5 Import/Export User Management**

→ Example  
Main Menu \ Settings \  
Administration \ Function  
Extensions



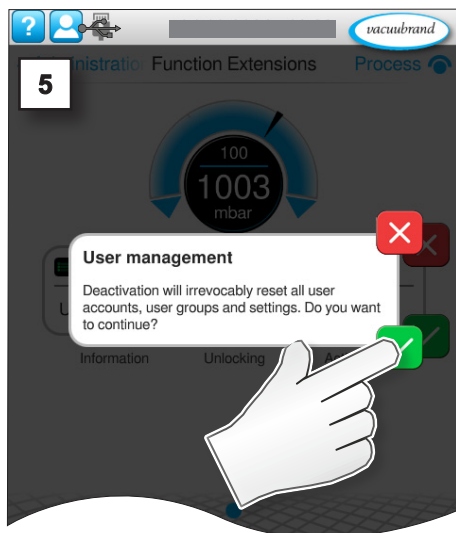
Tap



Cancel



Confirm



## 4 User Management

### 4.1 Creating an administrator password

→ Example

Creating a password  
when activating User  
Management



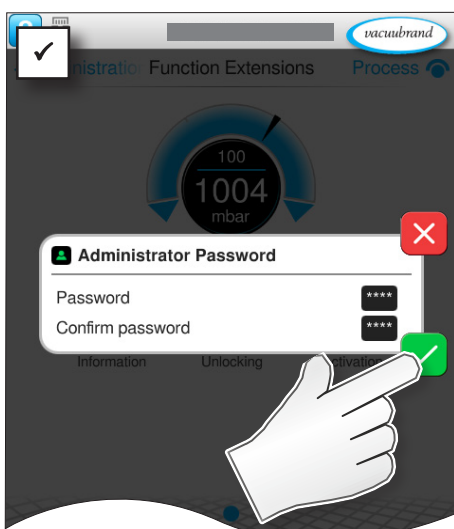
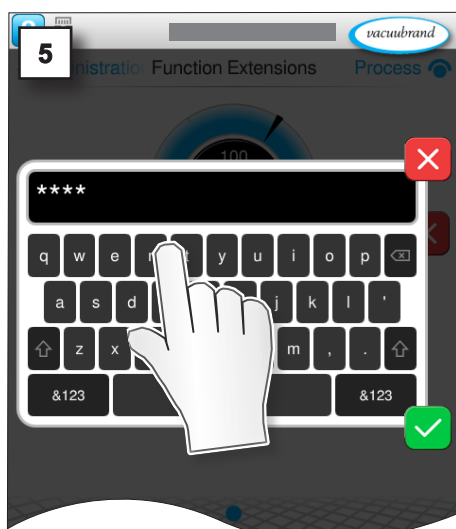
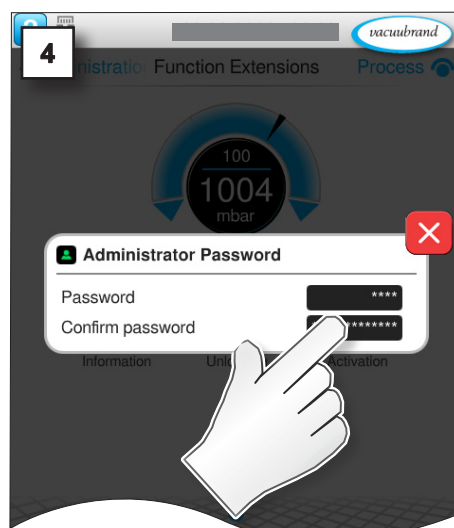
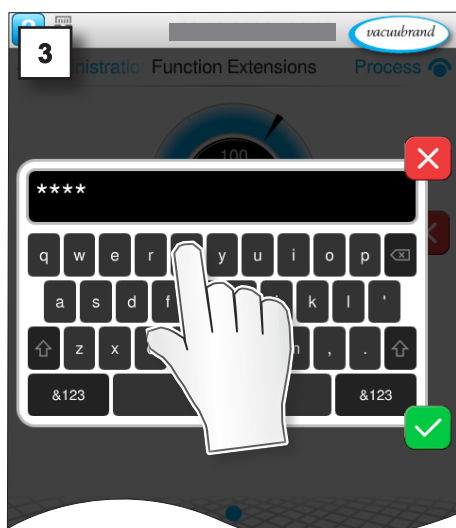
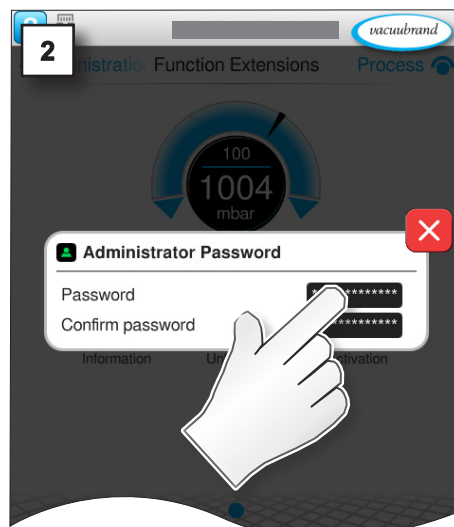
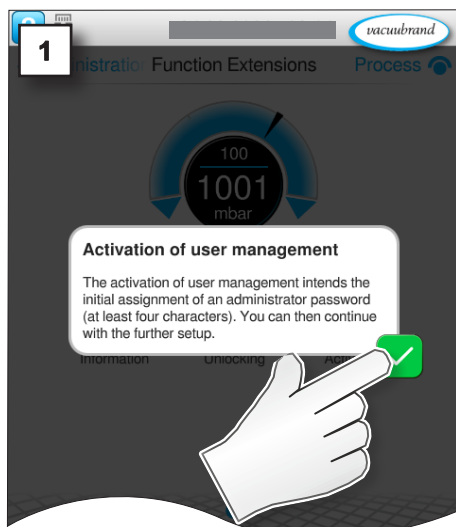
Tap



Cancel



Confirm



**NOTE**

- ⇒ Protect your controller from unauthorized access.
- ⇒ Store passwords and access data in a secure location.

**4.2 User Accounts****4.2.1 Setting up and editing**

Only the administrator or users who are assigned to the administrators user group can create new users.

**Creating a new user**

→ Example  
Main Menu \ Settings \  
Administration



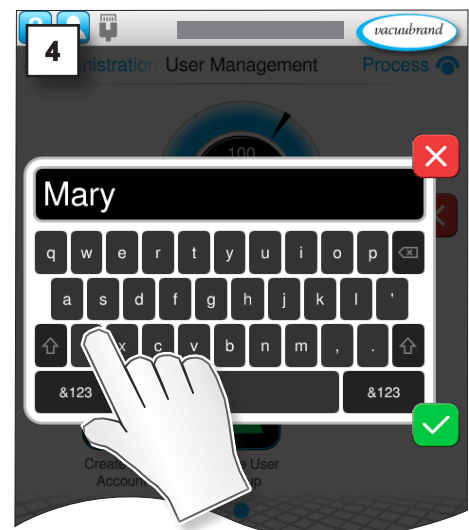
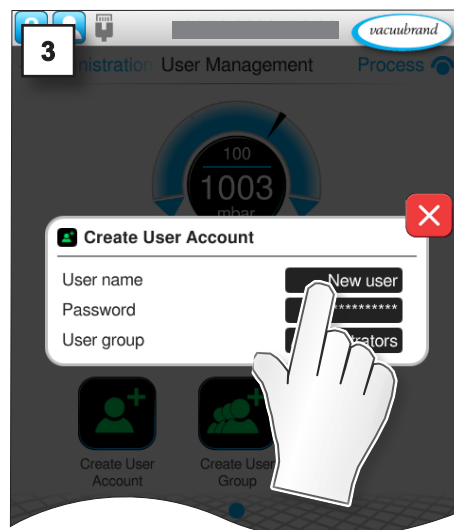
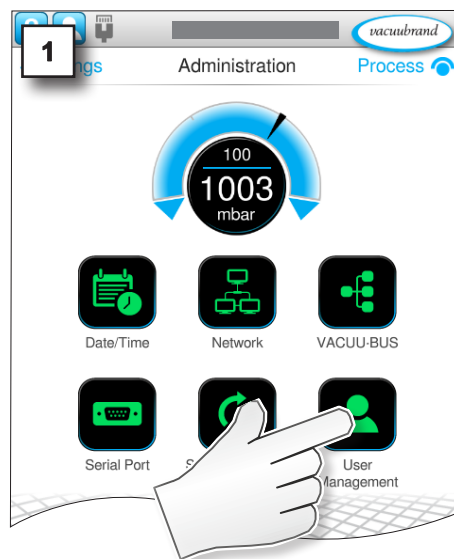
Tap



Cancel



Confirm





→ Example  
Creating a new user



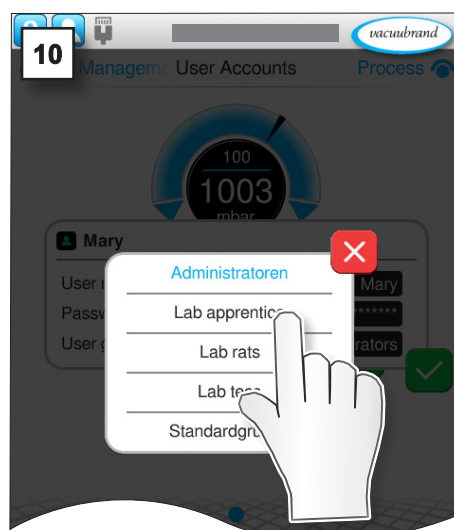
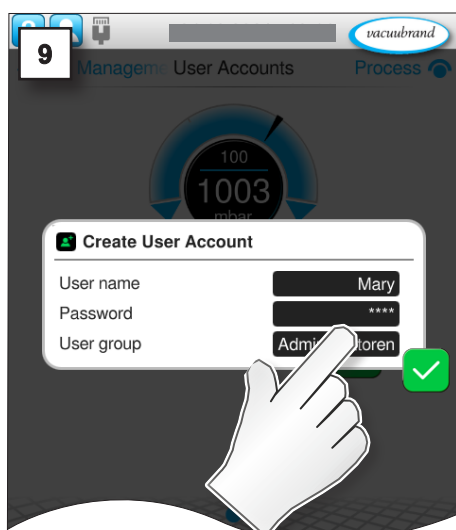
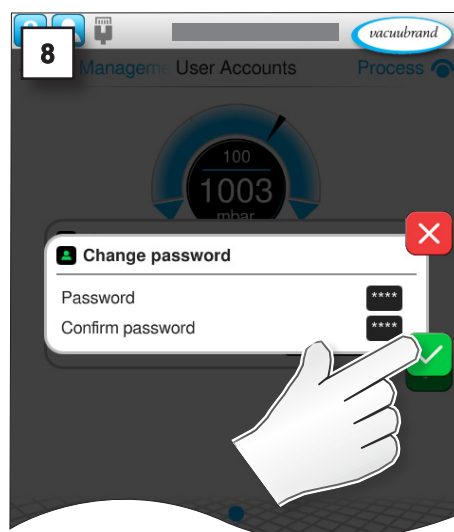
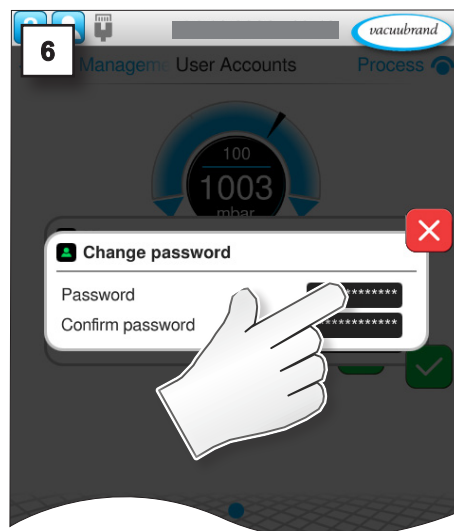
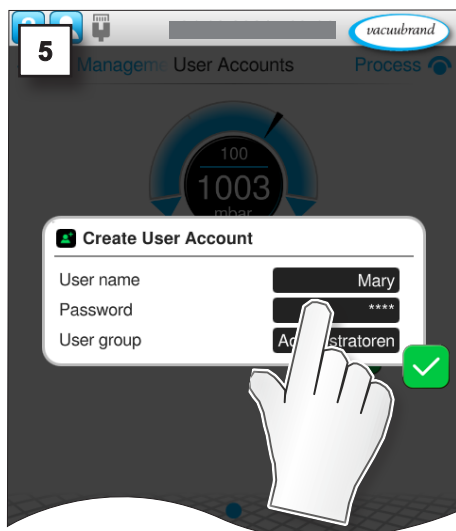
Tap



Cancel



Confirm

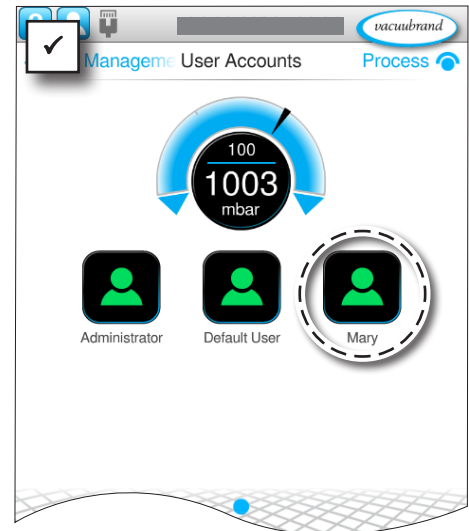




→ Example  
New user



Tap

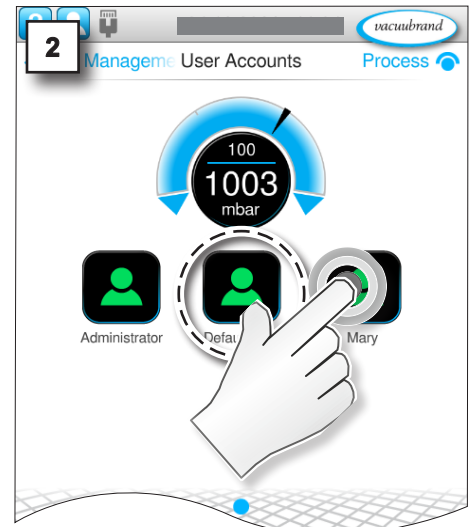
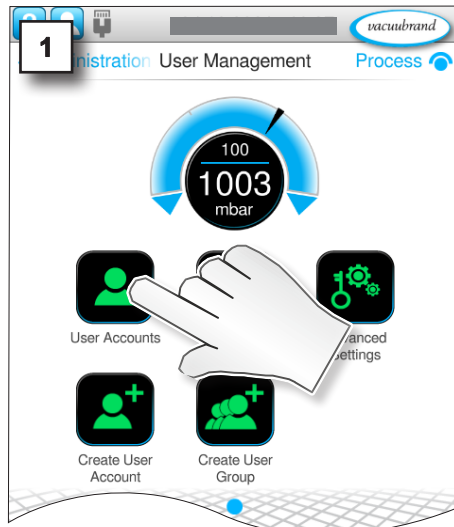


## Editing users

→ Example  
Main Menu \ Settings \  
Administration \ User  
Management \ User  
Accounts



Press and  
hold



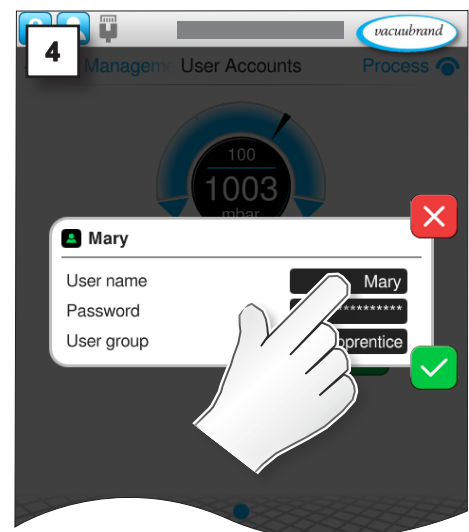
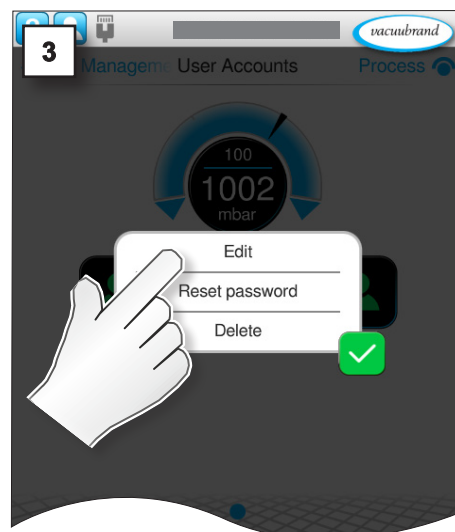
→ Example  
Editing a user  
Changing user data



Cancel



Confirm



→ Example  
Editing a user



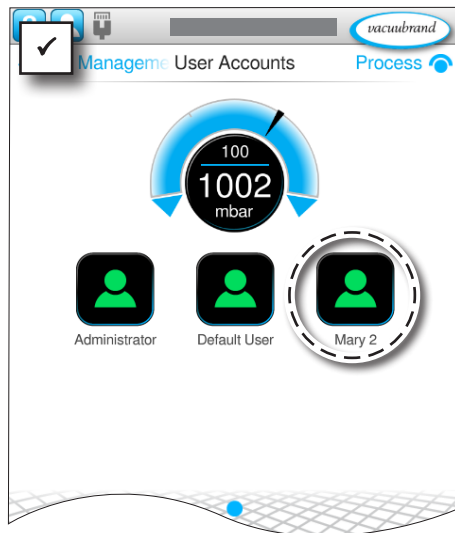
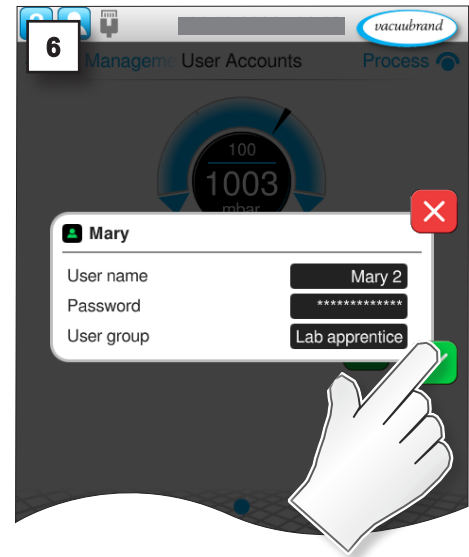
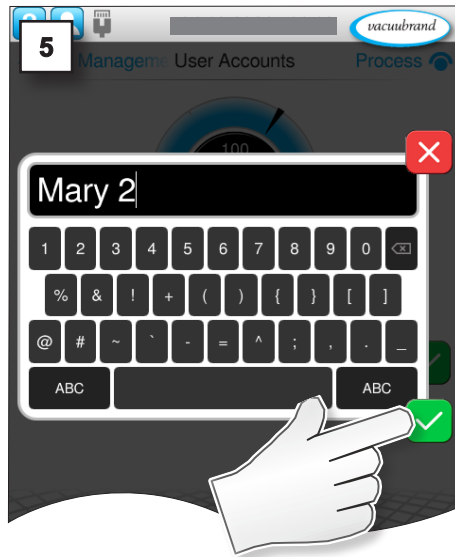
Tap



Cancel



Confirm



## 4.2.2 Removing users

### NOTE

**Users and the applications they created are permanently deleted after confirming the message.**

⇒ Export important user-specific applications before deleting a user.

### Deleting users

→ Example

Main Menu \ Settings \  
Administration \ User  
Management \ User  
Accounts



Tap



Press and  
hold

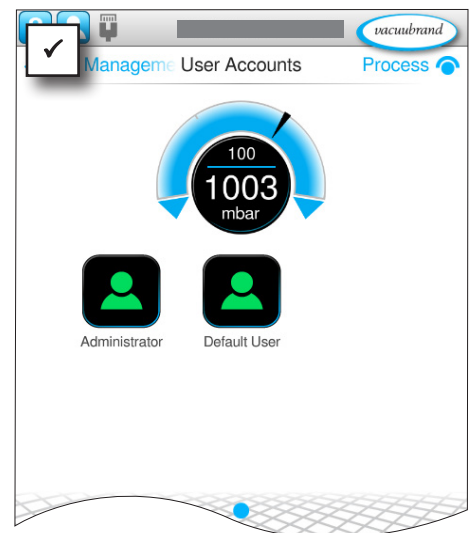
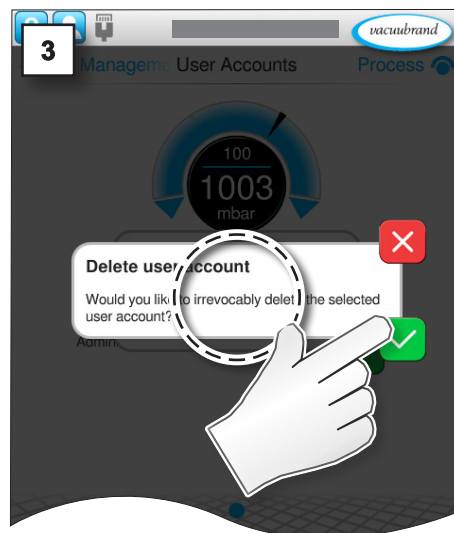
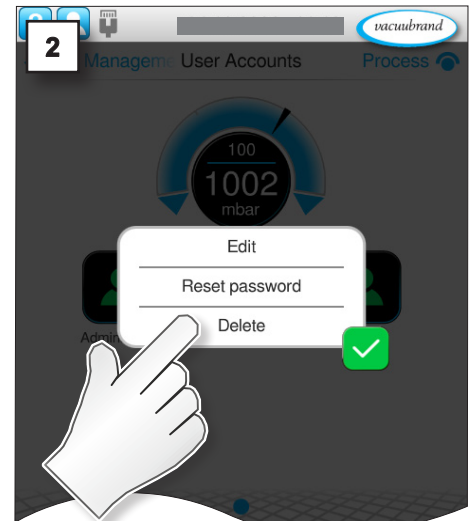
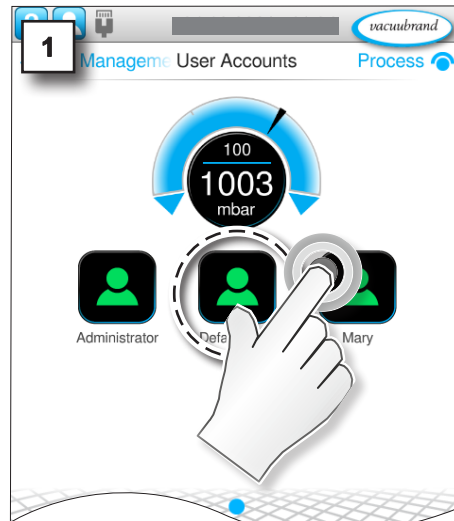


Cancel



Confirm

→ Example  
Deleting a user



## 4.3 User groups

### 4.3.1 Setting up and editing

#### Creating a new user group

→ Example  
Main Menu \ Settings \  
Administration \ User  
Management



Tap



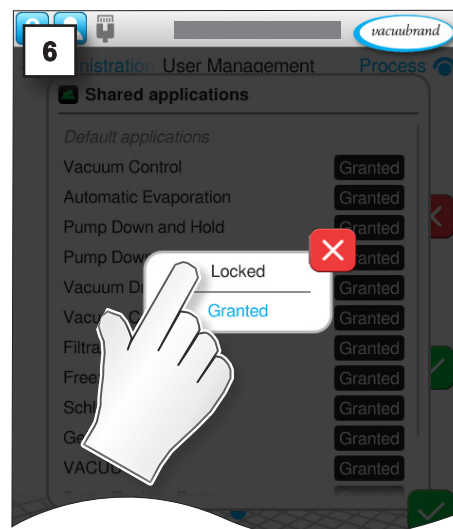
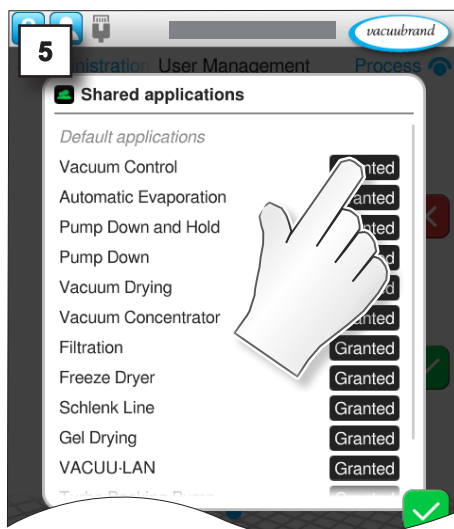
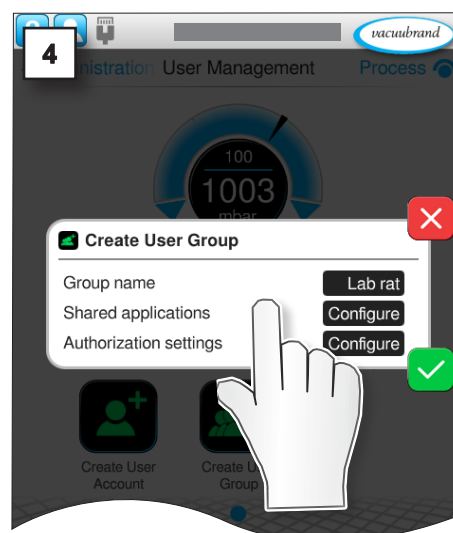
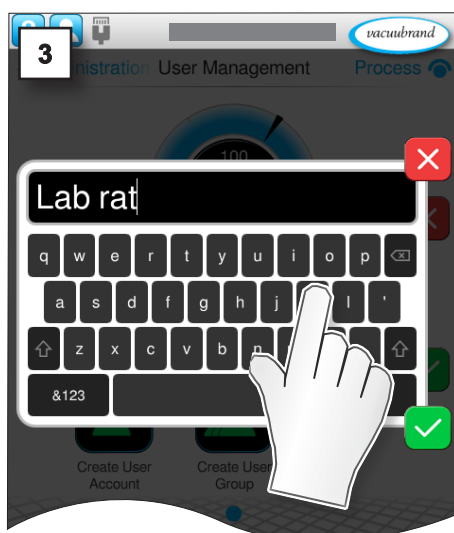
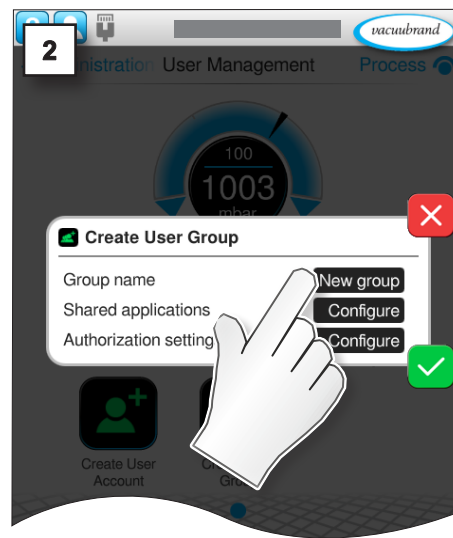
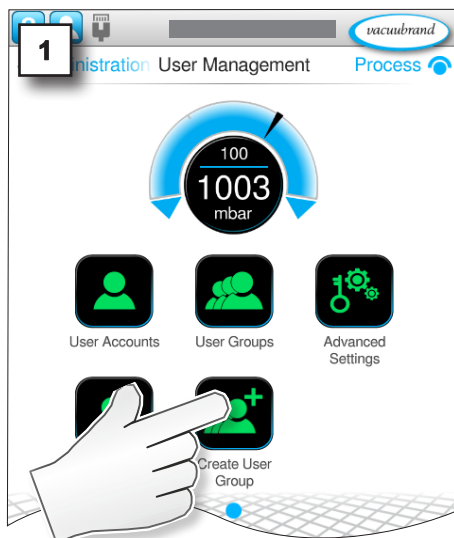
Cancel

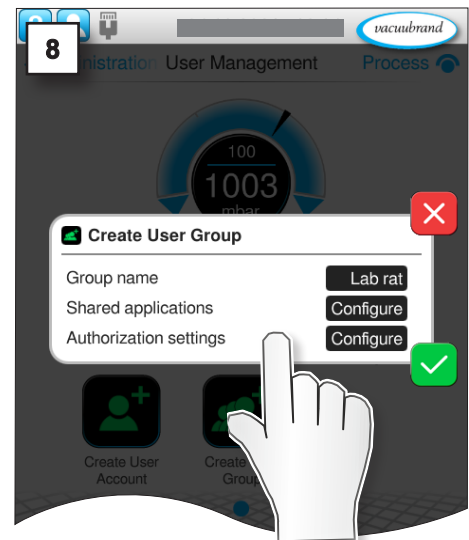
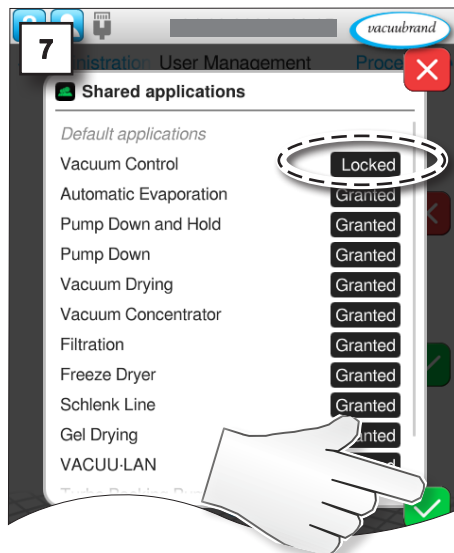


Confirm

→ Example  
Entering a group name

→ Example  
Configuring shared  
applications

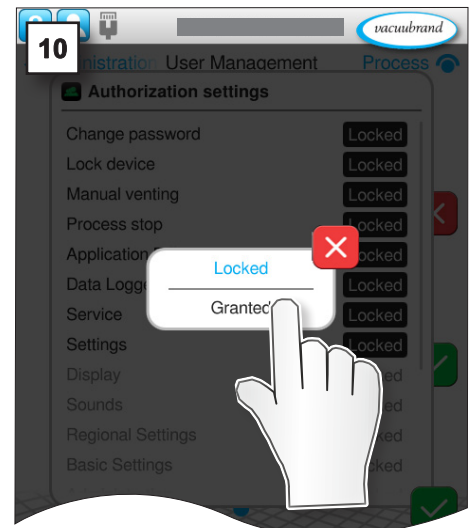
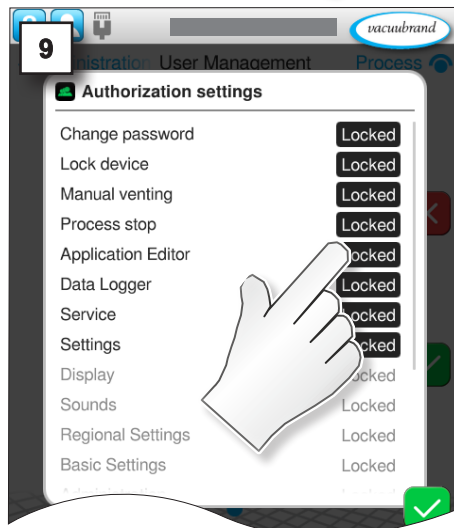




→ Example  
Adjusting authorization  
settings



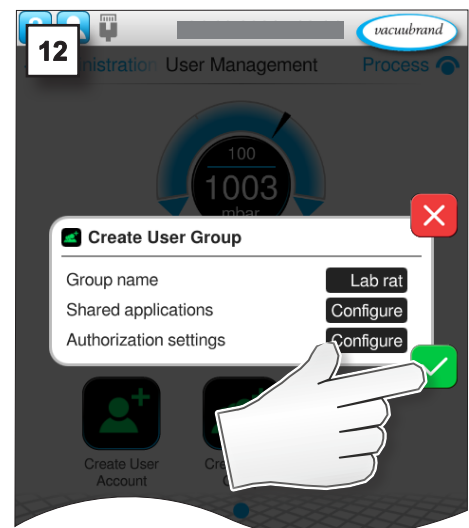
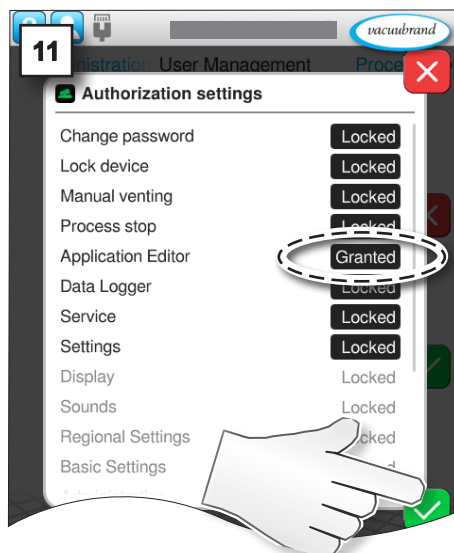
Tap



Cancel



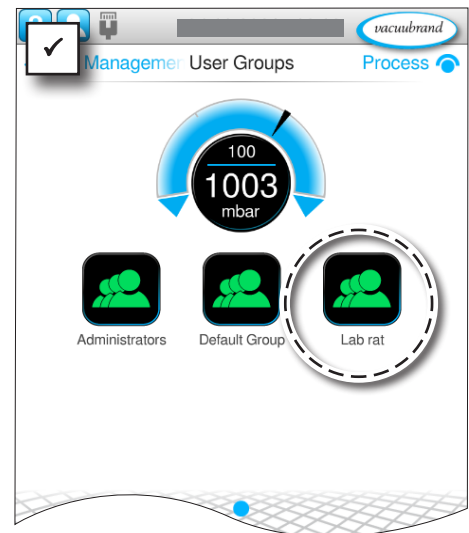
Confirm



→ Example  
Main Menu \ Settings \  
Administration \ User  
Management

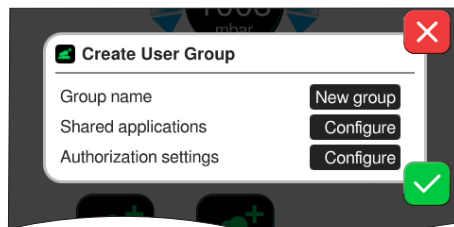


Tap



## Meaning of the context menu

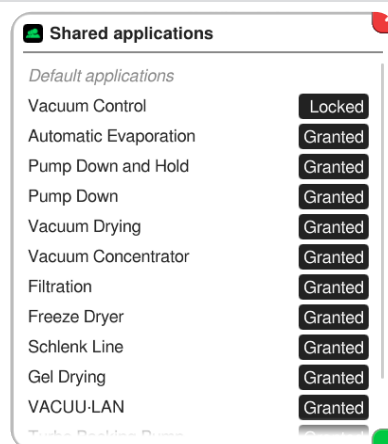
→ Example  
Creating a new user  
group



Context menu for creating a new user group with a suitable group name.

## Shared applications

→ Example  
Configuring shared  
applications

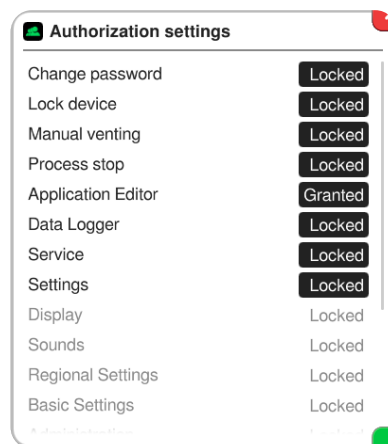


Authorization settings for using specific applications are made here.

- ▶ **Granted:** application unlocked for user group; granted applications are displayed in the application menu.
- ▶ **Locked:** application locked for user group and not listed in the application menu.
- ▶ The list contains all applications which are assigned to user accounts of the administrators group. This means that administrators can select from all default applications and the applications of other administrators when setting shared applications.



→ Example

Editing authorizations for  
a user group**Authorization settings**Menu for setting detailed authorizations of  
the user group.

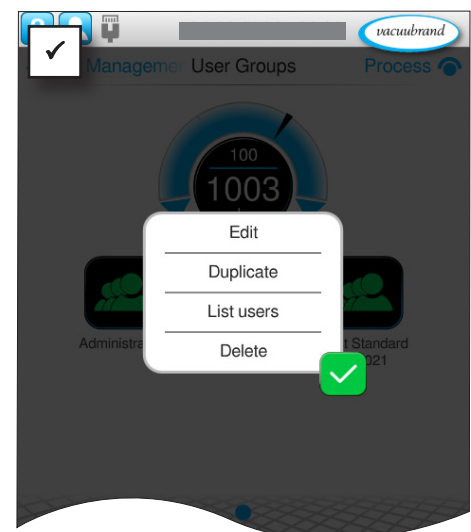
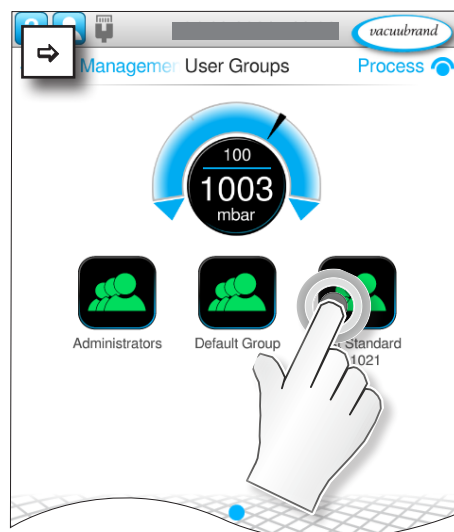
- ▶ **Granted:** use of function unlocked for the user group.



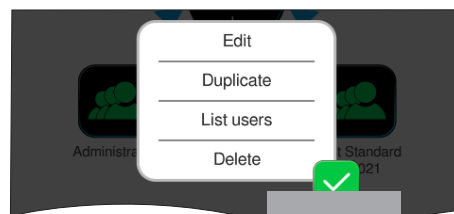
- ▶ **Locked:** Use of function locked for the user group; button greyed-out.

**4.3.2 Editing a user group + context menu****Opening the editing dialogue box**

→ Example

Main Menu \ Settings \  
Administration \ User  
Management \ User  
GroupsPress and  
hold

→ Example

Context menu for editing  
a user group**Meaning of the context menu**Context menu for editing existing user  
groups and displaying a list of assigned  
users.

Cancel



Confirm

→ Example  
Context menu for editing  
a user group

## Edit

**Test Standard 041021**

Group name: Test Standard 041021

Shared applications: [Configure](#)

Authorization settings: [Configure](#)

Adjustments to a user group can be made in the editing dialogue box at any time.

- ▶ change names,
- ▶ grant or lock access to applications,
- ▶ limit or expand user authorizations.

## Duplicate

**Test Standard 041021 - Copy**

Create a copy of the selected user group.

### NOTE

Only the user group is duplicated along with all its settings, not the assigned user accounts.

## List users

**List users**

The following users are assigned to this group:

[New lab user](#)

List users who are assigned to this user group.

## Delete

**Delete user group**

Would you like to irrevocably delete the selected user group including all assigned user accounts and their applications?

Number of assigned users: 1

Delete a user group after confirming the security prompt.

### NOTE

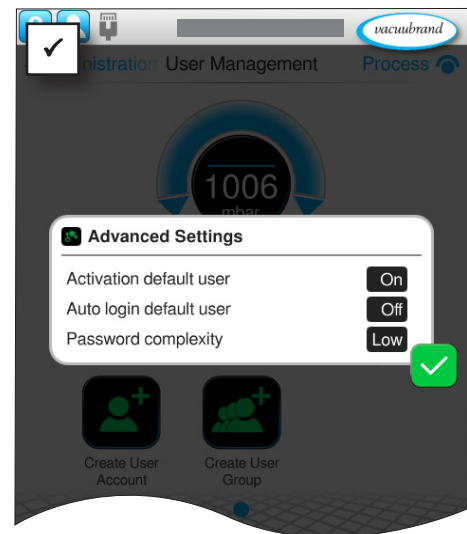
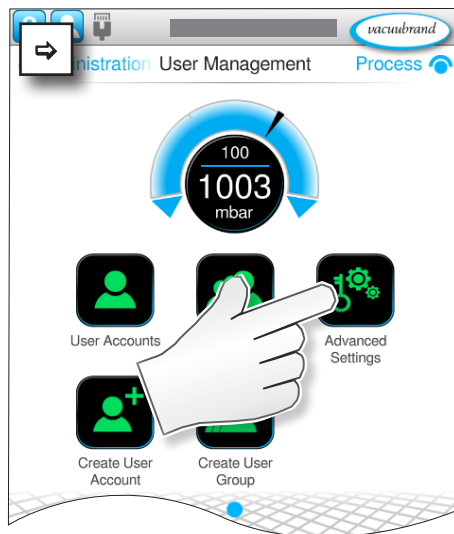
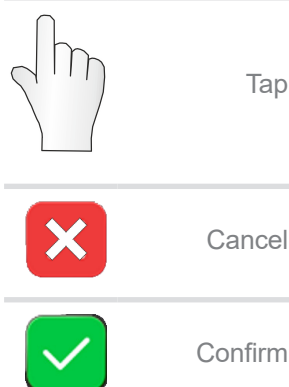
When user groups are deleted, the assigned user accounts are deleted; this means all user accounts and their applications are also deleted when a user group is deleted.



### 4.3.3 Advanced Settings

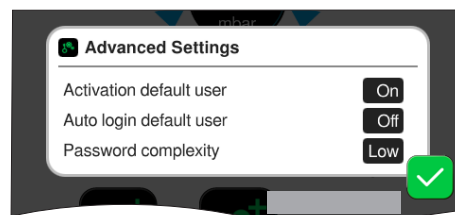
#### Opening Advanced Settings

→ Example  
Main Menu \ Settings \  
Administration \ User  
Management



#### Meaning of the context menu

→ Example  
Context menu for  
Advanced Settings



Menu for setting attributes for default users and user password requirements.

#### Activation default user

- Off
  - ▶ Default user deactivated.
  - ▶ Default user not in the login list.
- On
  - ▶ Default user activated.
  - ▶ Default user listed in the login list.

#### Auto login default user

- Off
  - ▶ Automatic login for default user deactivated.
  - ▶ Login of default user required after starting controller.
- On
  - ▶ Automatic login for default user activated.
  - ▶ Login of default user not required after starting controller.

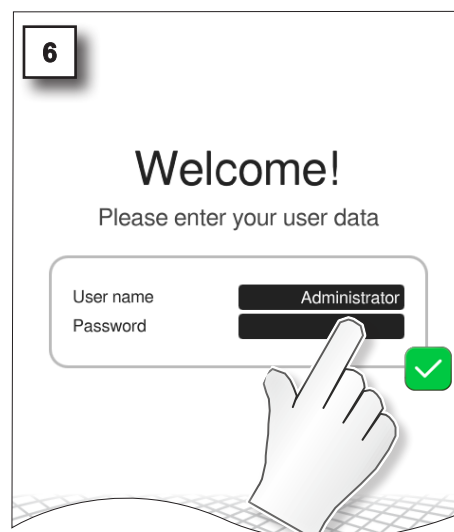
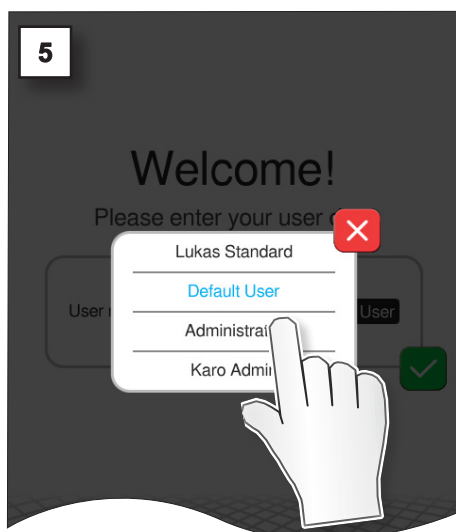
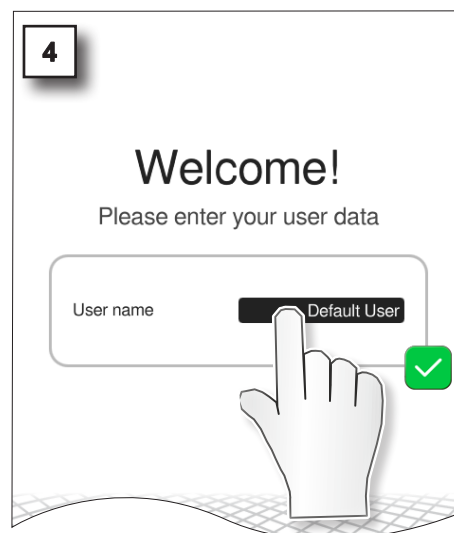
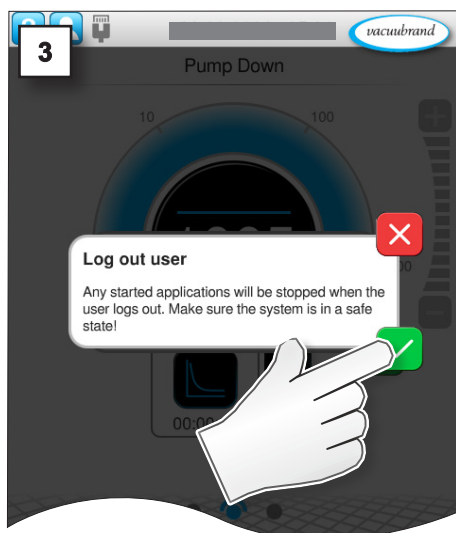
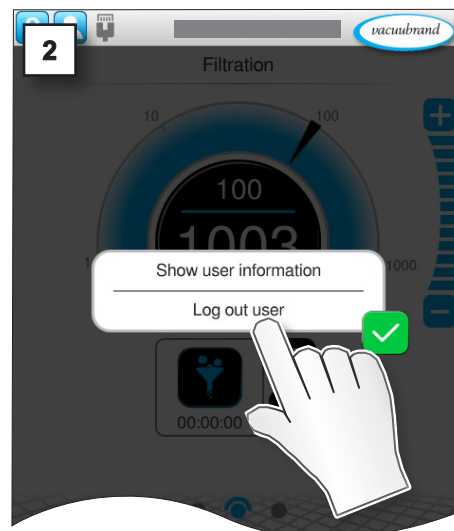
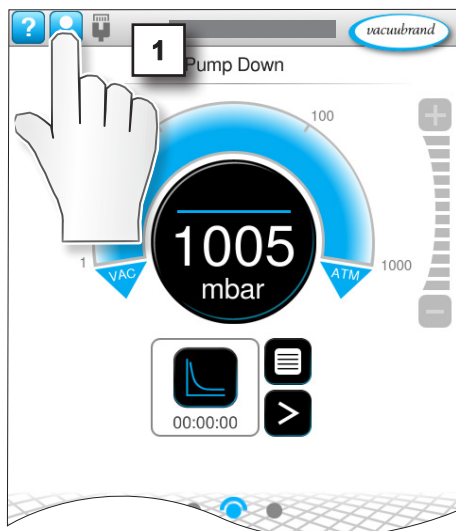
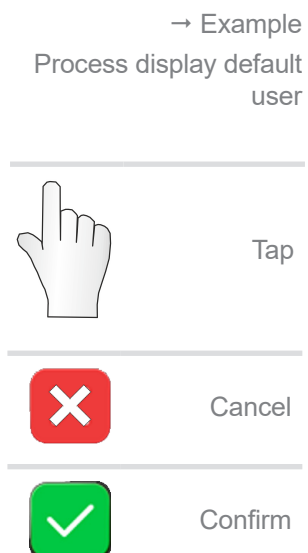
#### Password complexity

- Low
  - ▶ At least 4 arbitrary characters.
- Medium
  - ▶ At least 8 characters, upper and lower case.
- High
  - ▶ At least 8 characters, upper and lower case, numbers and special characters.

## 4.4 User information

### 4.4.1 Switching users

#### From default user to administrator





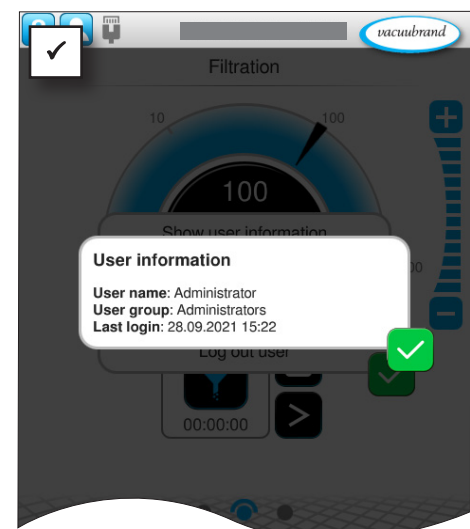
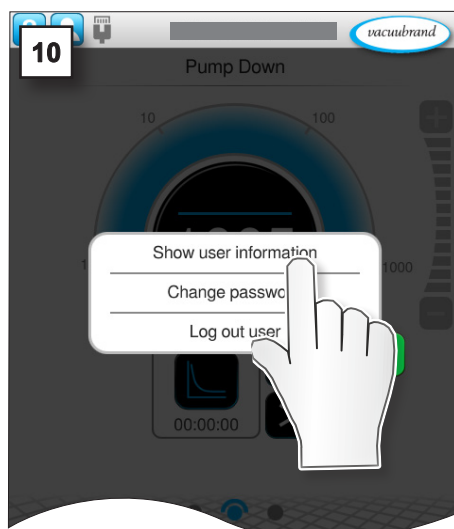
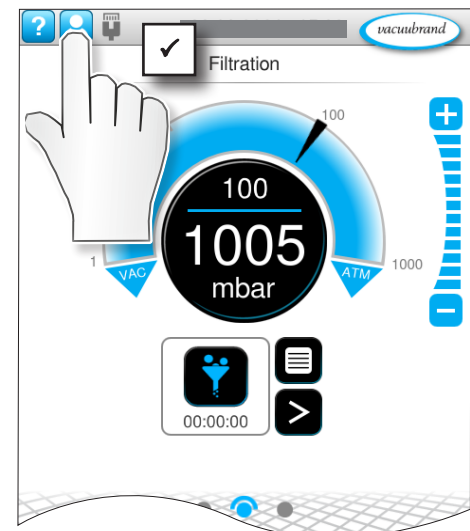
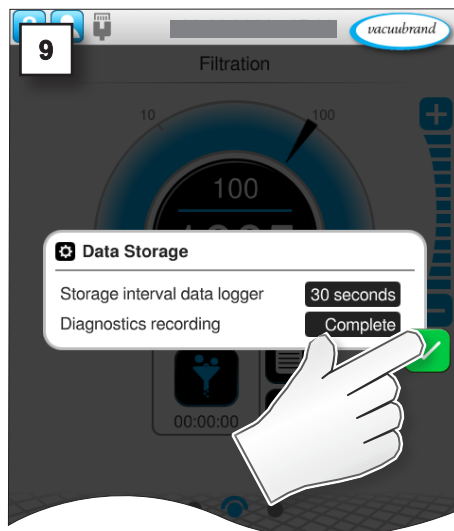
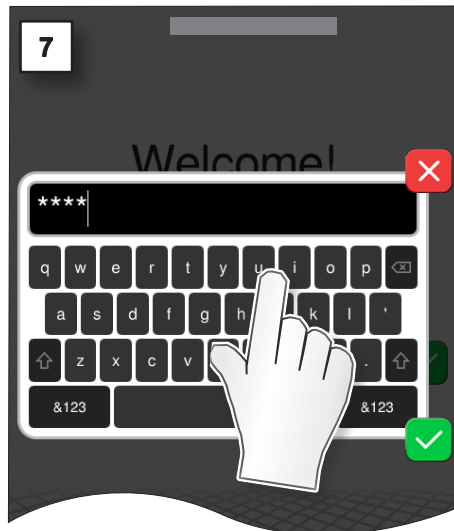
Tap



Cancel



Confirm



→ Example  
User information



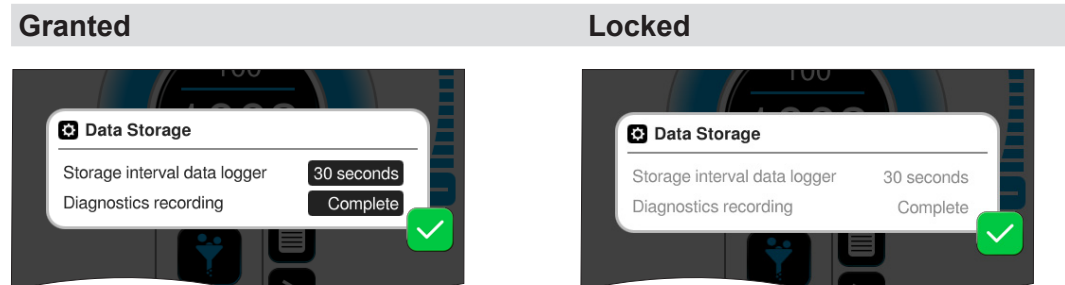
The default user has the only user account without a password.  
Therefore, no password can be entered on the login screen.

## 4.4.2 Locking and unlocking (display)

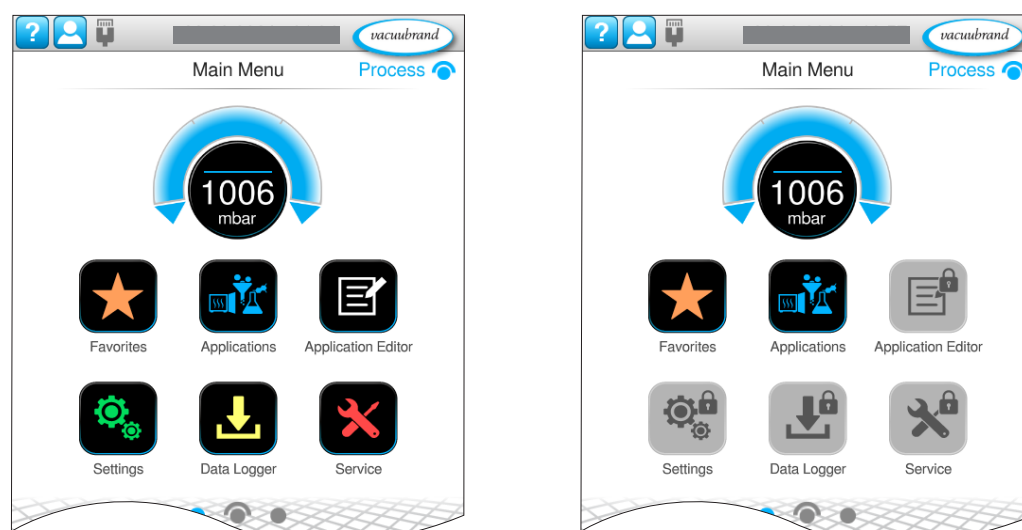
The menus in your controller may be displayed differently, depending on the user and the authorization settings. Users see only granted applications.

### Display comparison

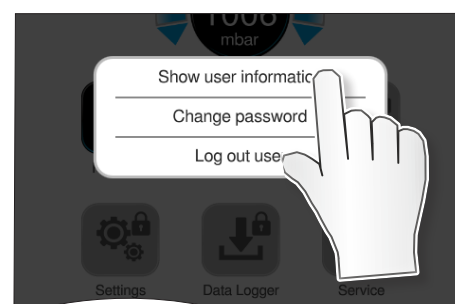
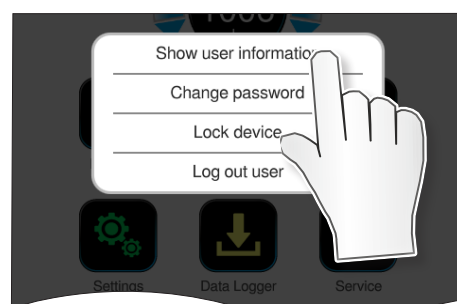
→ Example  
Unlocked and locked  
views



→ Example  
Main menu: unlocked  
and locked views



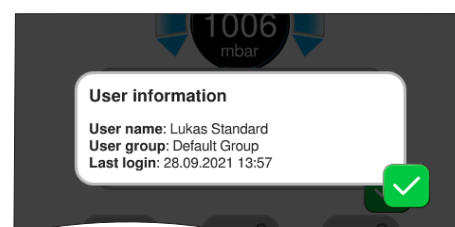
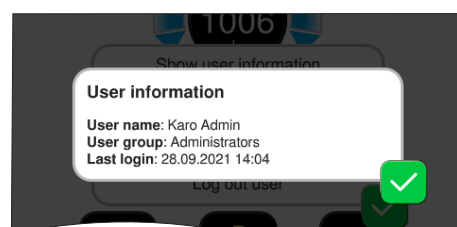
Tap



Cancel



Confirm

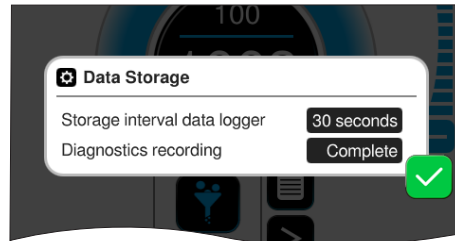


### 4.4.3 Other context menus explained

The following descriptions only apply in connection with the unlocked User Management function and are contingent on authorizations granted to the respective user.

#### Data storage

→ Example  
Pop-up information on  
current data storage



The data storage pop-up dialogue is shown at each restart and each time a new user logs in. Depending on the user's authorization, these settings can either be changed or not (content greyed out).

#### Storage interval data logger

Logging off	Data logging is switched off.
Interval in seconds	Data logging with defined time interval(s).

#### Recording diagnostics data

Minimal	Default setting for recording diagnostics data.
Complete	Records the following data: <ul style="list-style-type: none"> <li>▶ User name of the user who started the process,</li> <li>▶ Diagnostics data (incl. time in each case),</li> <li>▶ User login/logout,</li> <li>▶ Locking/unlocking of the controller by a user,</li> <li>▶ Reset the administrator password,</li> <li>▶ Initial set-up of User Management,</li> <li>▶ Deactivation of User Management.</li> </ul>

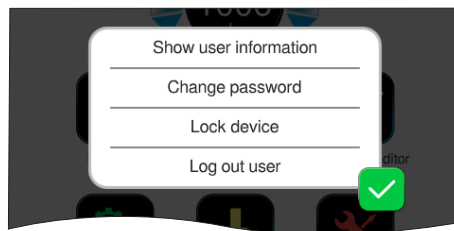
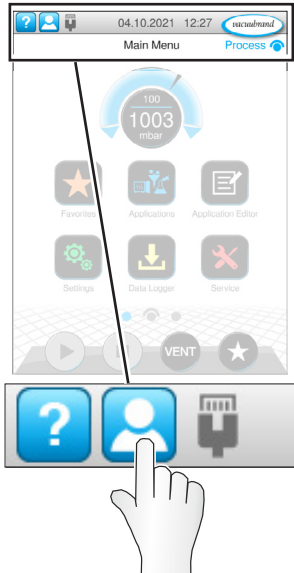
#### Example – recorded process data

→ Example  
Display of recorded  
process data

Abpumpen	Administrator		
Timestamp	DateTime	Step	VS-C 1
1632834051	Tue Sep 28 15	1	1000
1632834052	Tue Sep 28 15	1	1000
1632834053	Tue Sep 28 15	1	1000
1632834054	Tue Sep 28 15	1	1000
1632834055	Tue Sep 28 15	1	1000
1632834056	Tue Sep 28 15	1	1002
1632834057	Tue Sep 28 15	1	1008

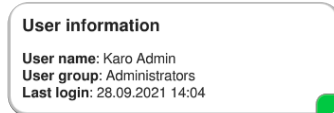
## User Options

→ Example  
User Options context menu



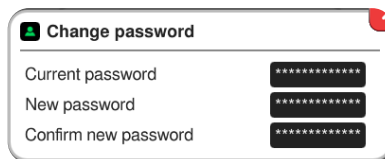
Context menu of User Options.  
The selection of functions depends on the authorization of the respective user.

### Show user information



Displays information on the user currently logged in.

### Change password



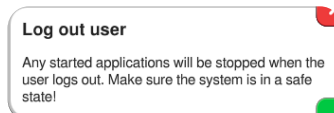
Context menu for changing the user password.

### Lock device



Switch on screen lock to prevent unauthorized access to the controller. If an application has been started, it can continue to run in the background.  
To unlock, tap the display and enter the user password. The user is displayed on the lock screen.

### Log out user

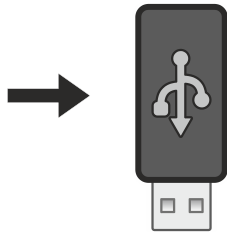


Confirm the security prompt to open the login screen, and change the user. If an application has been started, logging out will stop it.

## 4.5 Import/Export User Management

### IMPORTANT!

For import and export, the option *User Management + Applications* is only visible when User Management is unlocked and activated.



### 4.5.1 Export User Management + Applications

You can use the export function to transfer or save data, e.g. created users or user groups, to other controllers via a USB flash drive.

#### Exporting created users, user groups and applications

→ Example  
Main Menu \ Settings \  
Administration



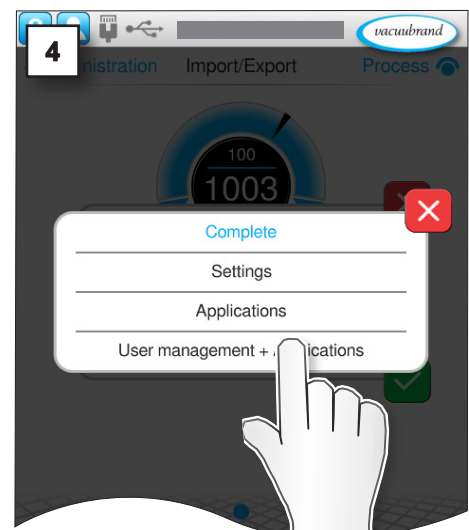
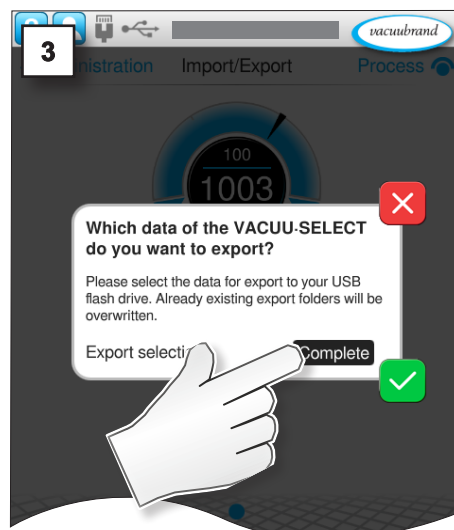
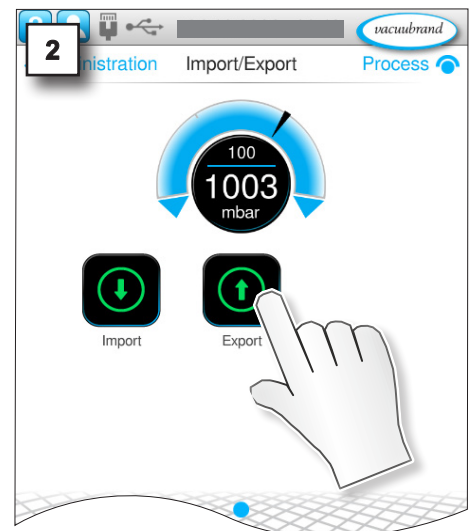
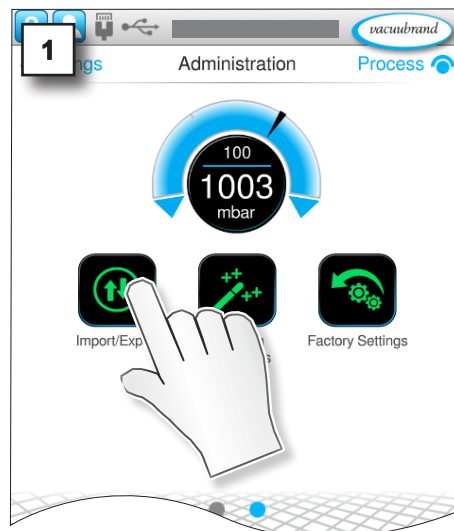
Tap



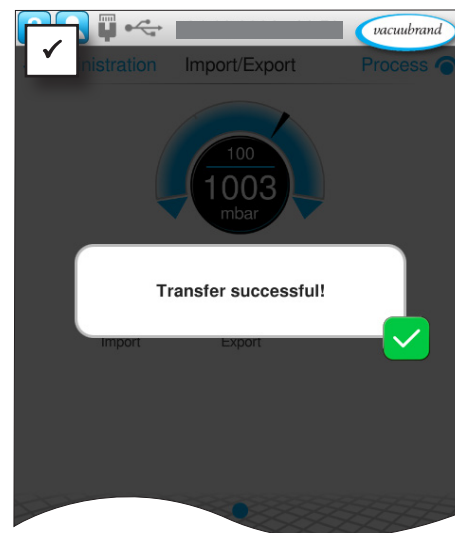
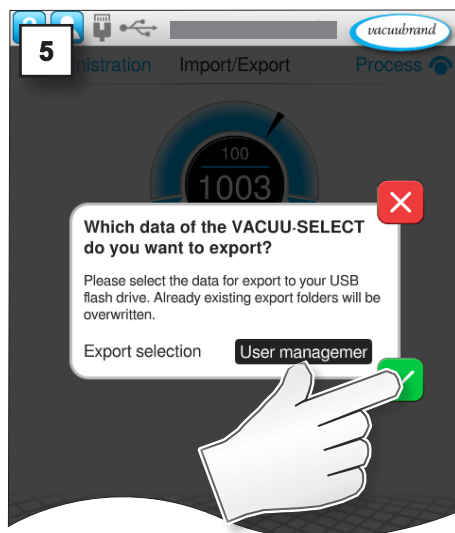
Cancel



Confirm







## 4.5.2 Import User Management + Applications

You can use the import function to import data, e.g. created or saved users or user groups, to your controller via a USB flash drive.

### Importing created users, user groups and applications

→ Example  
Main Menu \ Settings \  
Administration



Tap



Cancel



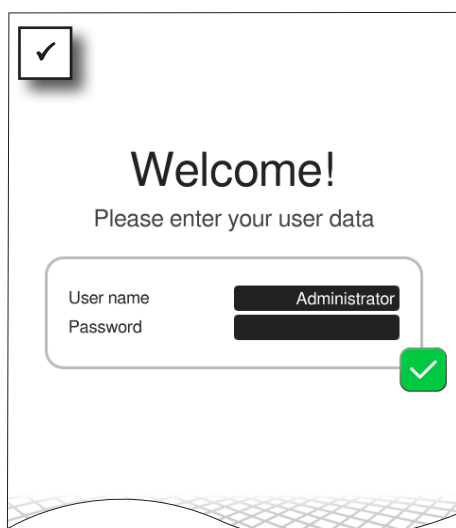
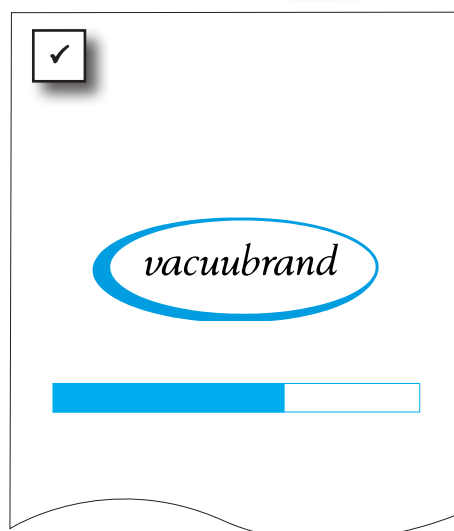
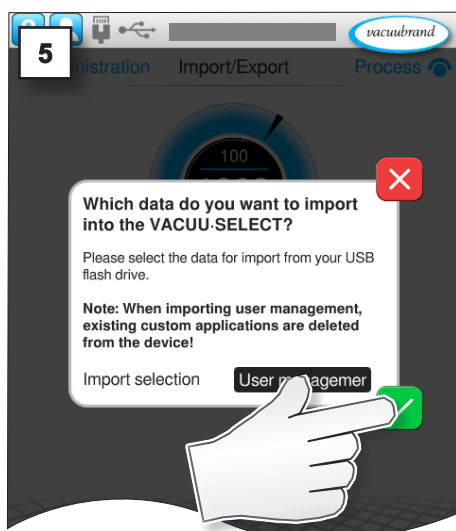
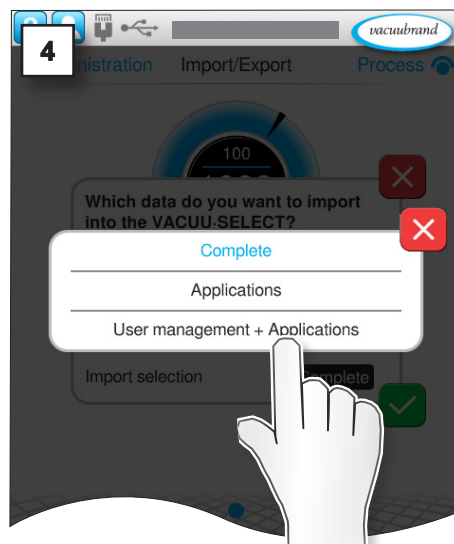
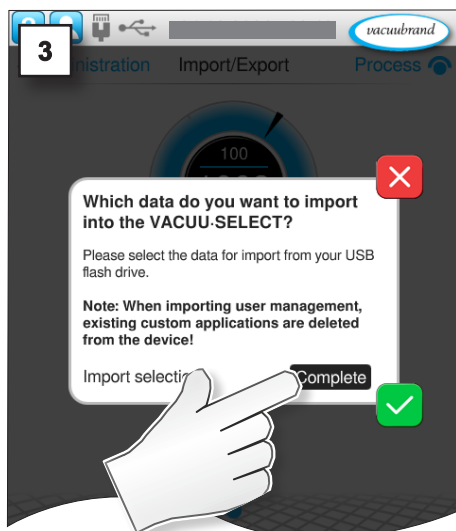
Confirm



### NOTE

**When importing data from User Management, existing custom applications and created users are deleted from the device.**





## 4.6 Login/logout

**IMPORTANT!**

Only one user can be logged in to the controller at any given time. Simultaneous use of the controller by multiple users is not possible.

### 4.6.1 Login at start up

A login window appears when the controller is started.

Exception: When the default user and auto login are active, the user is automatically logged into this account; → see Chapter: **4.3.3 Advanced Settings**.

### 4.6.2 Auto start function

Requirement: Auto start is activated in the default settings of the controller; → refer to the user manual of your controller for more information.

After the controller is restarted, this is only activated if the default user is activated, auto login is activated and the default user was the last to log in and had started an application.

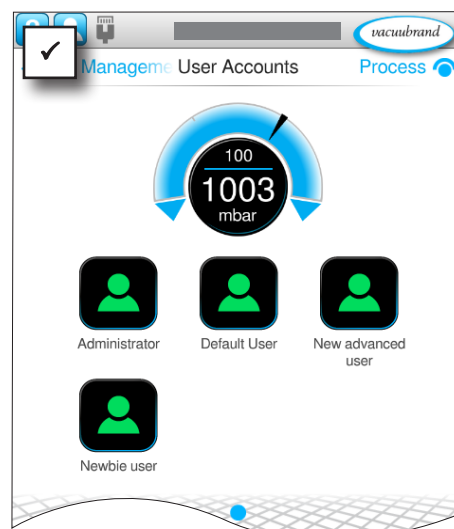
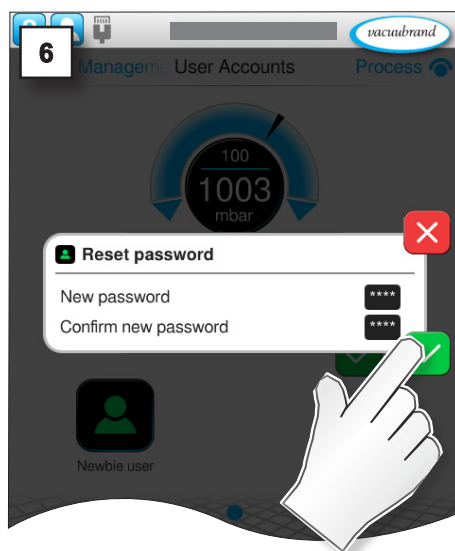
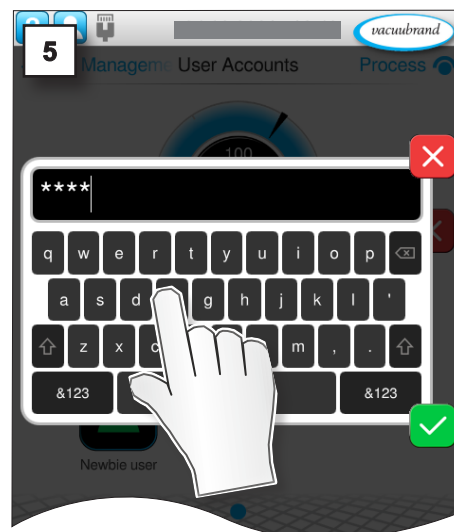
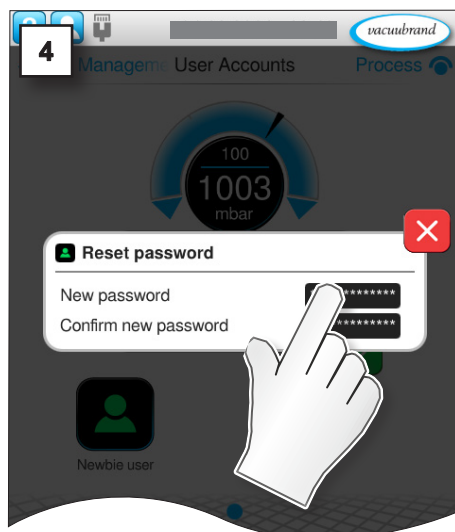
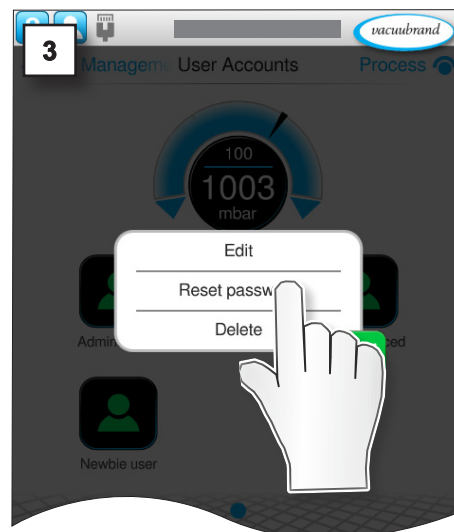
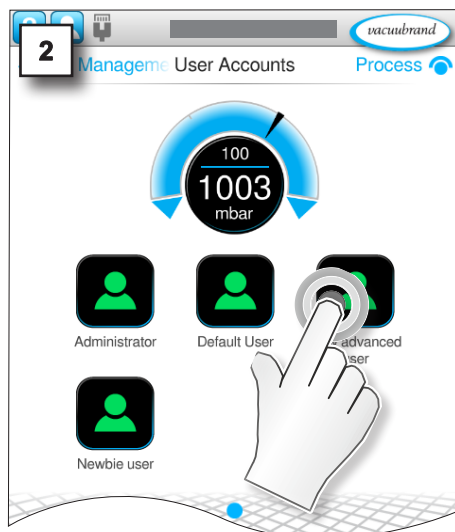
## 4.7 Password reset

### 4.7.1 User password

#### Resetting the user password

Assign new user  
password

1. Log in as administrator.



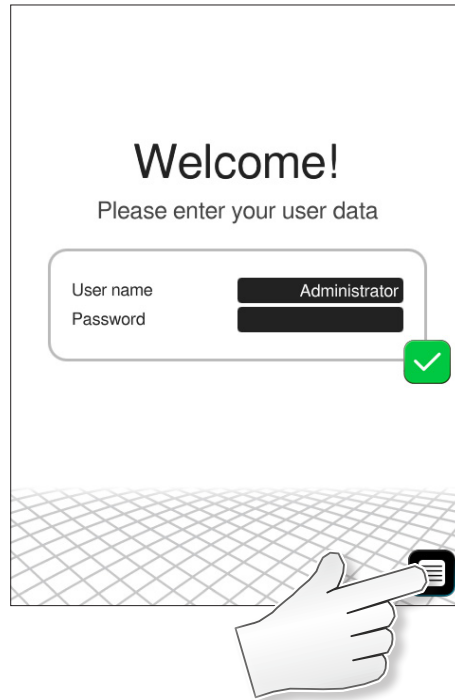
### 4.7.2 Administrator password

If your password is no longer available, you can assign a new password as an administrator in the login screen.

#### Resetting the administrator password

Assign new administrator password

1. Turn the controller off and on again.
- 2.



3. Have the license code or license file for your controller ready and proceed as follows: **3.3.1 Via license code** or **3.3.2 Via USB flash drive**

## 5 SYNCHRO

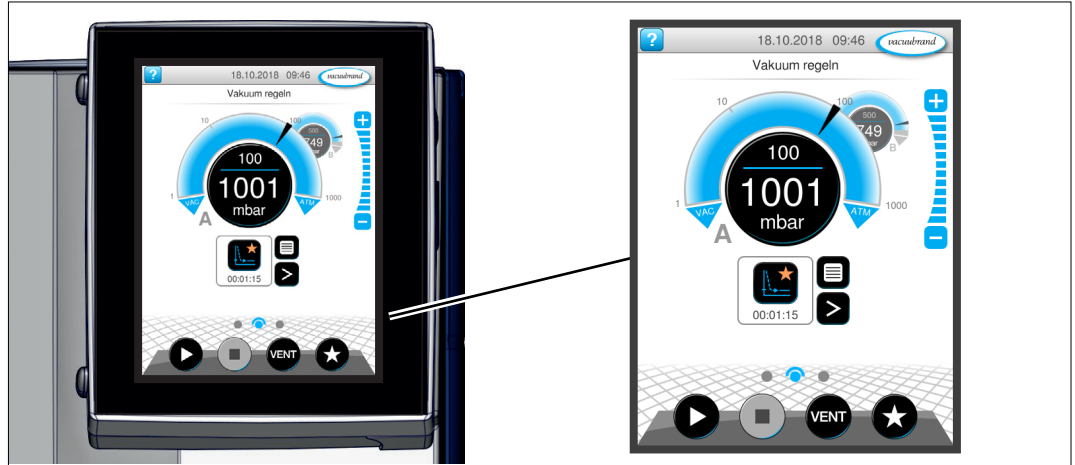
### 5.1 User interface

Special feature

Two pressure curves are displayed in the process screen, pressure curves **A** and **B**, corresponding to labeling of valves A and B. This enables control of two different applications. The processes will run essentially independently of each other. Operating elements and settings are always active for the selected process.

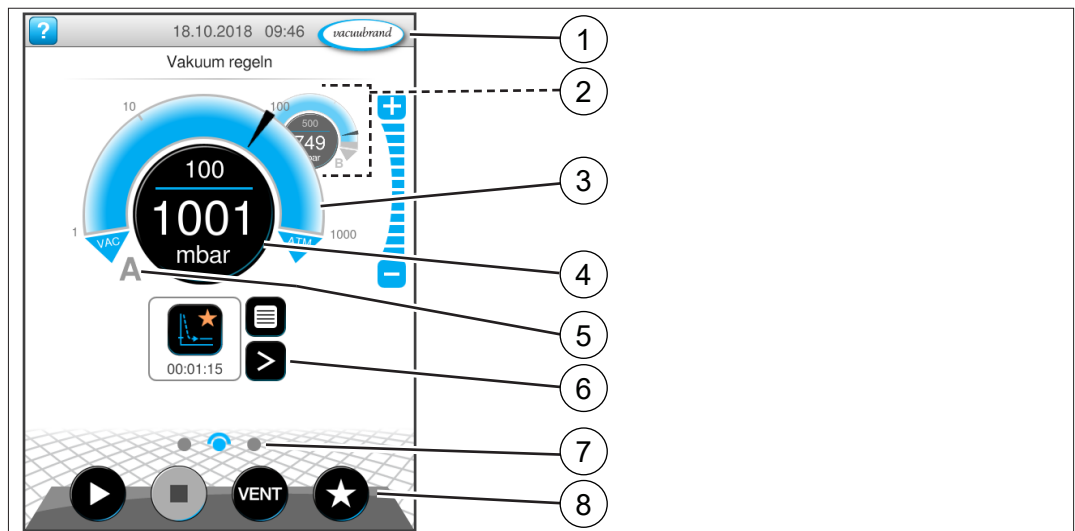
#### User interface

VACUU-SELECT® with  
two process screens



#### Process screen

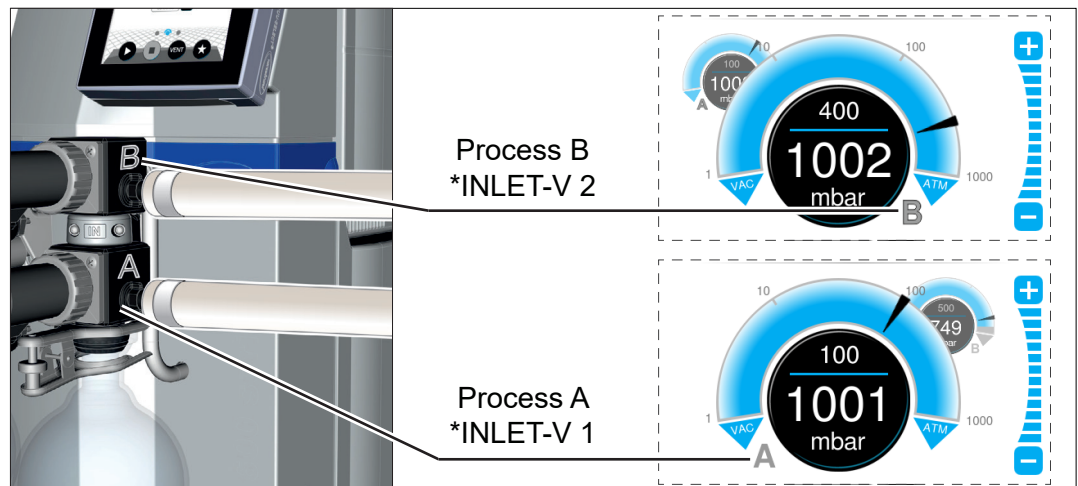
Pressure display for two  
electronically controlled  
processes A and B



- |   |   |
|---|---|
| 1 | Status bar  |
| 2 | Process screen B – in the background  |
| 3 | Analogue pressure display – pressure curve  |
| 4 | Digital pressure display – pressure value (target value, actual value, pressure unit) |
| 5 | Process screen A – in the foreground  |
| 6 | Process screen with context features  |
| 7 | Screen navigation   |
| 8 | <b>Operating elements</b> for control   |

## Assignment of the process screen

→ Example  
Assignment of process  
screen and valves  
(view of details)



To avoid operating errors or simultaneous operation of two processes, the process screen can be switched; see:  
⇒ **Switch the process screen from A to B on page 43 and**  
⇒ **Switch the process screen from B to A on page 43.**

## Alignment \*VACUU·BUS addresses

VACUU·BUS addresses  
for processes A and B

Certain VACUU·BUS components like vacuum sensors, venting valves, and in-line solenoid valves need to be assigned exclusively to one of the two processes. The alignment takes place automatically according to the assigned address:

Component	VACUU·BUS name	Address no.	
		Process A	Process B
In-line solenoid valve	INLET-V	1, 3	2, 4
Venting valve	VENT-V	1, 3	2, 4
Vacuum sensor, capacitive	VS-C	1, 3	2, 4
Pirani vacuum sensor	VS-P	1, 3	2, 4
Reference sensor	VS-REF	1, 3	2, 4



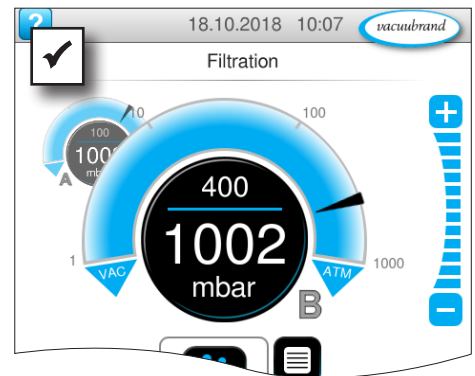
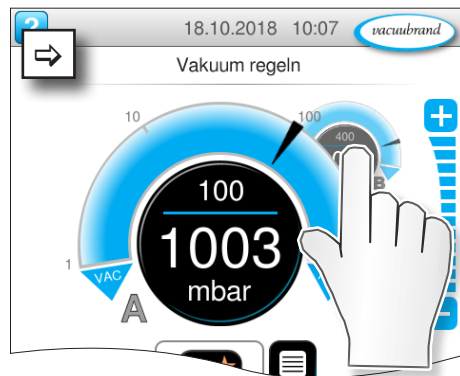
In the event of an error, only the process assigned to that component is stopped, e.g., error on VS-C 1 vacuum sensor → Process A stops → Error message process screen A.

Components not supported: I/O REMOTE, I/O VACUUM (OUT), I/O SPEED (OUT), all VARIO pumps and valve type END-V.

All other VACUU·BUS components are global and are used by both processes, e.g., WATER-V coolant valve.

### Switch the process screen from A to B

→ Example  
Switch from process A to process B

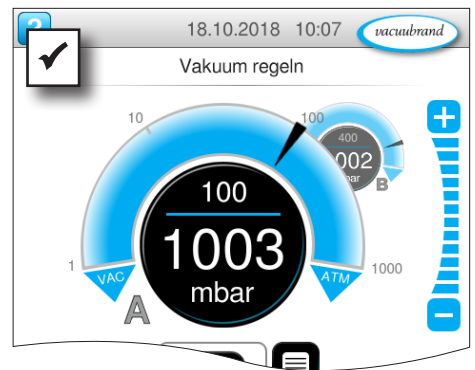
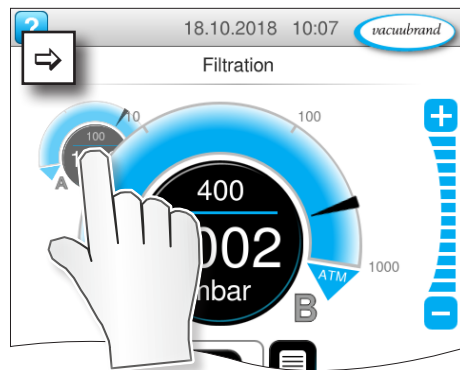


⇒ Tap on rear pressure curve.

- ☒ Process B in front.
- ☒ Operation process B enabled.
- ☒ Operation process A locked.

### Switch the process screen from B to A

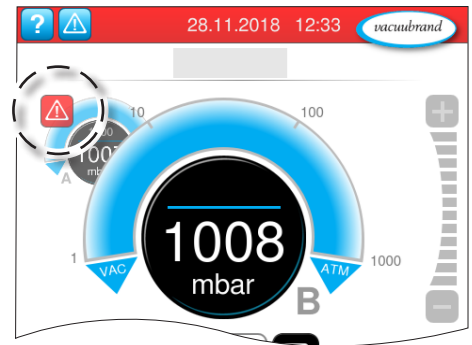
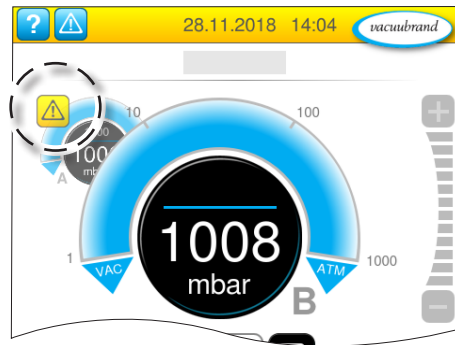
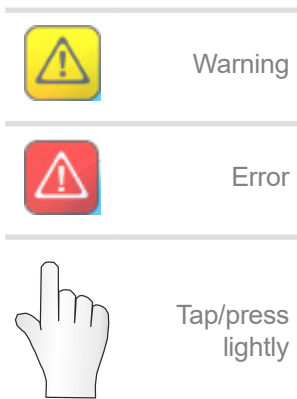
→ Example  
Switch from process B to process A



⇒ Tap on rear pressure curve.

- ☒ Process A in front.
- ☒ Operation process A enabled.
- ☒ Operation process B locked.

## 5.2 Error indication



Warnings and / or errors are indicated by a flashing pressure curve. If the flashing pressure curve is pressed, the process with fault can be called up. The process without fault continues operation. If both processes are affected by the fault, both processes stop.

For errors the same rule applies, as for a controller with only one pressure curve: remedy fault and acknowledge error message.



## 6 Troubleshooting

### 6.1 Function Extensions

Problem	► Possible cause	✓ Solution	Personnel
No license file found	<ul style="list-style-type: none"> <li>► No USB flash drive inserted.</li> <li>► USB flash drive inserted without a valid license.</li> </ul>	<ul style="list-style-type: none"> <li>✓ Insert a USB flash drive with valid license.</li> </ul> <p><b>IMPORTANT!</b> License files must be saved to the root directory of the USB flash drive and not to a sub-directory.</p>	Operator, specialist

### 6.2 User Management

Problem	► Possible cause	✓ Solution	Personnel
Login failed	<ul style="list-style-type: none"> <li>► Password not valid for selected user.</li> <li>► No password entered or password entered incorrectly.</li> </ul>	<ul style="list-style-type: none"> <li>✓ Choose an appropriate user.</li> <li>✓ Enter the correct password.</li> <li>✓ Turn off the controller, restart it and log in.</li> </ul>	Administrator, default user
Invalid or incorrect password	<ul style="list-style-type: none"> <li>► Wrong user password entered.</li> <li>► Password changed.</li> <li>► Password no longer available.</li> </ul>	<ul style="list-style-type: none"> <li>✓ Enter the correct user password.</li> <li>✓ On the login screen, reset the password with the aid of a valid license file.</li> <li>✓ Assign a new password and store it in a secure location.</li> </ul>	Default user, administrator
Functions in the main menu locked	<ul style="list-style-type: none"> <li>► User authorizations have not been granted for the logged in user.</li> </ul>	<ul style="list-style-type: none"> <li>✓ Use authorized functions.</li> <li>✓ Consult with the administrator about the functions your users need and have authorization granted for these functions.</li> </ul>	Default user, administrator
Controller locked	<ul style="list-style-type: none"> <li>► Controller was locked by user with the authorization <i>Lock Device</i>. Corresponding user is listed on the lock screen.</li> </ul>	<ul style="list-style-type: none"> <li>✓ Tap on the controller display and enter the password.</li> <li>✓ Turn off the controller, restart it and log in again.</li> </ul>	Default user, administrator

Problem	Possible cause	Solution	Personnel
User Management menu not shown	<ul style="list-style-type: none"> <li>▶ User Management deactivated.</li> <li>▶ Function extensions not unlocked.</li> <li>▶ No valid license found.</li> </ul>	<ul style="list-style-type: none"> <li>✓ Activate menu under Main Menu \ Settings \ Administration \ Function Extensions \ Function Activation (= ON); password entry required.</li> <li>✓ Unlock function extensions.</li> <li>✓ Enter the matching license code for your controller or transfer the license file via USB flash drive.</li> </ul>	Administrator
Created users or user groups missing	<ul style="list-style-type: none"> <li>▶ No users or user groups created.</li> <li>▶ User Management was deactivated in the Function Extensions menu, without exporting User Management beforehand.</li> <li>▶ Controller was reset to its default settings.</li> </ul>	<ul style="list-style-type: none"> <li>✓ New users and user groups can be created and edited in User Management.</li> <li>✓ Export and save created users and user groups to a USB flash drive before you deactivate User Management or reset the controller to its default settings.</li> </ul>	Administrator
Button or input field grayed out	<ul style="list-style-type: none"> <li>▶ User input locked.</li> </ul>	<ul style="list-style-type: none"> <li>✓ If use of a function is required, have the administrator grant authorization to use the function.</li> <li>✓ Change users.</li> </ul>	Default user, administrator

## 6.3 SYNCHRO

Problem	Possible cause	Solution	Personnel
Missing components	<ul style="list-style-type: none"> <li>▶ Erroneous component configuration.</li> <li>▶ Missing VACUU·BUS components.</li> </ul>	<ul style="list-style-type: none"> <li>✓ Check component configuration.</li> <li>✓ Connect missing VACUU·BUS components and run component detection.</li> </ul>	Operator, specialist

## 7 Appendix

### Ordering information

Ordering information

Product	Order No.
User Management	20700900
SYNCHRO	20700910

### Supply sources

Supply sources

Purchase original accessories and original replacement parts from a branch location of **VACUUBRAND GMBH + CO KG** or from your local specialist shop.



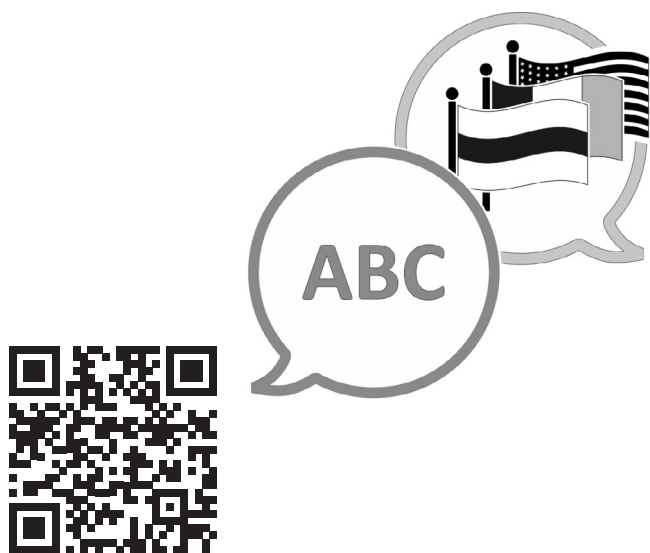
Information on the complete range of products can be found in the current [product catalogue](#).

For orders, questions about vacuum control or optimal accessories, please contact your local specialist shop or the **VACUUBRAND** [sales office](#).

## 8 Index

<b>A</b>		
Acquiring a license .....	10	
Action instructions .....	7	
Action step .....	7	
Activating function extensions .....	12	
Adjusting authorization settings .....	25	
Assigning a new administrator password .....	40	
Assigning a new user password .....	39	
<b>B</b>		
Buttons in Administration menu .....	8	
Buttons in Function Extensions menu .....	8	
Buttons in User Management menu .....	8	
<b>C</b>		
Changing user data .....	21	
Configuring shared applications .....	24, 26	
Context menu for Advanced Settings .....	29	
Context menu for editing a user group .....	27, 28	
Context menu for User Options .....	34	
Creating a new user .....	20	
Creating a new user group .....	26	
Creating an User Management password .....	18	
<b>D</b>		
Deleting users .....	23	
Display of operating steps .....	7	
Display of recorded process data .....	33	
<b>E</b>		
Editing authorizations for a user group .....	27	
Editing user groups .....	27	
Editing users .....	21, 22	
Entering a license code .....	14	
Export User Management .....	35	
<b>F</b>		
Function extensions .....	12	
<b>G</b>		
Gestures .....	6	
Graphical operating steps .....	7	
<b>I</b>		
Import User Management .....	36	
Information on data storage .....	33	
<b>N</b>		
New symbol in the status bar .....	7	
New user .....	21	
<b>O</b>		
Opening function extensions .....	12	
Operating steps .....	7	
Ordering information .....	47	
<b>P</b>		
Product description of function extensions .....	10	
<b>R</b>		
Requesting a license file .....	13	
Requirements .....	10	
Resetting the administrator password .....	40	
Responsibility matrix .....	9	
<b>S</b>		
Supply sources .....	47	
Supported software version .....	10	
Switch the process screen from A to B .....	43	
Switch the process screen from B to A .....	43	
<b>T</b>		
Transferring the file via USB flash drive .....	15	
<b>U</b>		
Unlocked and locked views .....	32	
Unlocking with license code .....	10	
User Management function extension .....	10	





[VACUUBRAND > Support > Manuals](#)

Manufacturer:

**VACUUBRAND GMBH + CO KG**  
**Alfred-Zippe-Str. 4**  
**97877 Wertheim**  
**GERMANY**

Phone:

Head office +49 9342 808-0

Sales +49 9342 808-5550

Service +49 9342 808-5660

Fax: +49 9342 808-5555

Email: [info@vacuubrand.com](mailto:info@vacuubrand.com)

Web: [www.vacuubrand.com](http://www.vacuubrand.com)